



Wafer-Style, intermediate installation butterfly valve metal type 039
With hand lever
Flange standard Metric/Inch/ASTM - PN10
Disc: ductile iron/Rilsan® coated

Model:

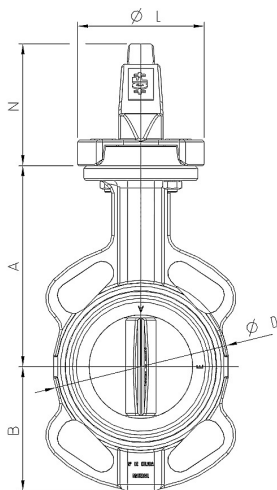
- Wafer Style
- Body GGG40 (A 395 / A395 M-99, EN-JIS 1020 EN1563) Rilsan® coating
- Installation length: EN 558 row 20
- Interface according to DIN EN ISO 5211
- Pressure range: 16 bar (DN 50-300)
- Axis DN50 - DN300: Single-piece axis with square profile, material stainless steel DIN Norm 1.4021
- Flange connection: DN50 - DN300: PN6, PN10, ANSI 125/150 Lbs., BS 10-D/E

Option:

- Electric and pneumatic actuator on request
- Other liner material on request

Note:

Hand lever DN125, DN150 and DN200 with 10 grid positions



d (mm)	DN (mm)	Size (inch)	PN (bar)	kv-value (Δp=1 bar) (l/min)	Liner: EPDM Code	PF	SP	Weight (kg)			
63	50	2	16	3167	199 039 000	3	39	226	201	1	4.00
75	65	2 ½	16	4667	199 039 001	3	39	226	201	1	4.70
90	80	3	16	7167	199 039 002	3	39	226	201	1	5.00
110	100	4	16	11833	199 039 003	3	39	226	201	1	6.40
140	125	5	16	18333	199 039 004	3	39	226	201	1	8.10
160	150	6	16	26667	199 039 005	3	39	226	201	1	9.70
225	200	8	16	46667	199 039 006	3	39	226	201	1	14.02

d (mm)	DN (mm)	Liner: FKM Code	Liner: EPDM DVGW Code	Liner: NBR Code
63	50	199 039 013	199 039 074	199 039 095
75	65	199 039 014	199 039 075	199 039 096
90	80	199 039 015	199 039 076	199 039 097
110	100	199 039 016	199 039 077	199 039 098
140	125	199 039 017	199 039 078	199 039 099
160	150	199 039 018	199 039 079	199 039 100
225	200	199 039 019	199 039 080	199 039 101

d (mm)	DN (mm)	H (mm)	H1 (mm)	H2 (mm)	H3 (mm)	L (mm)	L1 (mm)	Q (mm)	L2 (mm)
63	50	318	83	140	95	43	45	32	220
75	65	340	93	152	95	46	45	51	220
90	80	352	98	159	95	46	45	69	220
110	100	384	111	178	95	52	45	89	220
140	125	413	127	191	95	56	45	115	320
160	150	441	143	203	95	56	45	143	320
225	200	512	172	245	95	60	45	194	320

The technical data are not binding. They neither constitute expressly warranted characteristics nor guaranteed properties nor a guaranteed durability. They are subject to modification. Our General Terms of Sale apply.

Georg Fischer Piping Systems Ltd, Postfach, CH-8201 Schaffhausen/Switzerland Phone +41 -(0)52-631 1111 e-mail: info.ps@georgfischer.com Internet: <http://www.gfps.com>