



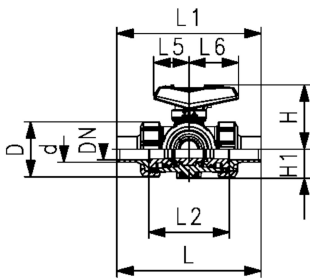
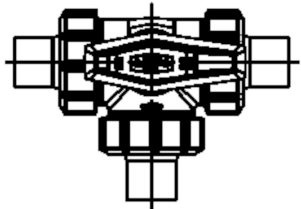
**PROGEF Plus 3-Way ball valve type 543 Pro silicone free
Horizontal/L-port
With butt fusion spigots IR-Plus SDR11 metric**

Model:

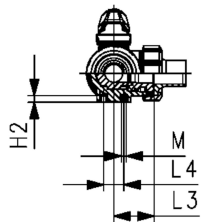
- Material: PP-H / silicone free cleaned
- Lockable lever as standard (DN10-DN50)
- For easy installation and removal (valve end and union nut are compatible with type 546)
- Ball seals PVDF
- Angle of operation 360° without turn limiter
- Turn limiter 90° enclosed, in different positions usable as a clip-on ring
- Integrated stainless steel mounting inserts
- Delivery status A-C opened, see flow scheme
- Z-dimension, valve end and union nut are compatible with type 543 (1stGeneration)

Option:

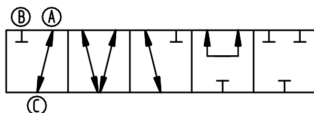
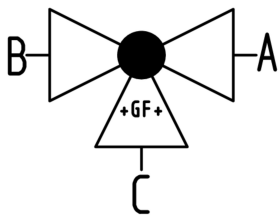
- Interface-module with position feedback sensor, incl. LED feedback (DN10-50)
- Manual spring return lever ("Dead man") (DN10-25)
- Pneumatic or electric actuators from GF
- Individual configuration of the valve possible



d (mm)	DN (mm)	PN (bar)	kv-value ($\Delta p=1$ bar) (l/min)	EPDM Code	SP	Weight (kg)	FKM Code	SP	Weight (kg)
20	15	10	75	167 543 242	1	0.171	167 543 252	1	0.171
25	20	10	150	167 543 243	1	0.247	167 543 253	1	0.247
32	25	10	280	167 543 244	1	0.377	167 543 254	1	0.377
40	32	10	480	167 543 245	1	0.629	167 543 255	1	0.629
50	40	10	620	167 543 246	1	0.953	167 543 256	1	0.953
63	50	10	1230	167 543 247	1	1.855	167 543 257	1	1.855



d (mm)	D (mm)	H (mm)	H1 (mm)	H2 (mm)	L (mm)	L1 (mm)	L2 (mm)	L3 (mm)	L4 (mm)	L5 (mm)	L6 (mm)	M (mm)	e (mm)	closest inch (inch)
20	50	61	28	8	146	82	72	36	25	35	47	6	1.9	½
25	58	74	32	8	163	106	85	43	25	44	62	6	2.3	¾
32	68	80	36	8	178	106	98	49	25	44	62	6	2.9	1
40	84	95	45	9	204	131	118	59	45	57	74	8	3.7	1 ¼
50	97	102	51	9	237	131	135	68	45	57	74	8	4.6	1 ½
63	124	117	65	9	296	152	176	88	45	66	86	8	5.8	2



The technical data are not binding. They neither constitute expressly warranted characteristics nor guaranteed properties nor a guaranteed durability. They are subject to modification. Our General Terms of Sale apply.

Data sheet

valid from: 4/3/25



Georg Fischer Piping Systems Ltd, Postfach, CH-8201 Schaffhausen/Switzerland Phone +41 -(0)52-631 1111 e-mail:
info.ps@georgfischer.com Internet: <http://www.gfps.com>