

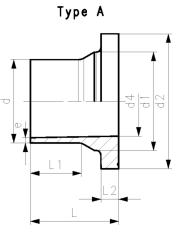


**PROGEF Standard Flange adaptor PP-H ANSI  
SDR11/PN10 Combined jointing face: flat and serrated**

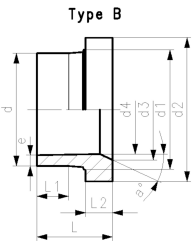
**Model:**

- Material: PP-H
- Conventional butt-welding according to DVS 2207
- IR- Infrared welding compatible
- Suitable for flange connections to metric (from d110 also to ANSI/ASME B16.5)
- Suitable for flange connections to metric
- Injection moulded

Flange adaptors are designed to work with most butterfly valves  
For bigger dimensions, see flange adaptors in other chapters



d (mm)	DN (mm)	PN (bar)	FM	Type	Code	Weight (kg)
25	20	10	IR	A	<b>727 798 757</b>	0.022
32	25	10	IR	A	<b>727 798 758</b>	0.039
40	32	10	IR	A	<b>727 798 759</b>	0.056
50	40	10	IR	A	<b>727 798 760</b>	0.087
90	80	10	IR	B	<b>727 798 763</b>	0.310



d (mm)	d1 (mm)	d2 (mm)	d3 (mm)	d4 (mm)	L (mm)	L1 (mm)	L2 (mm)	e (mm)	a
25	32	54		20	52	27	9	2.55	
32	40	63		26	54	28	10	3.15	
40	49	73		32	55	25	11	4.00	
50	60	82		40	62	32	12	4.95	
90	105	133	78	70	80	41	17	8.75	30

The technical data are not binding. They neither constitute expressly warranted characteristics nor guaranteed properties nor a guaranteed durability. They are subject to modification. Our General Terms of Sale apply.

Georg Fischer Piping Systems Ltd, Postfach, CH-8201 Schaffhausen/Switzerland Phone +41 -(0)52-631 1111 e-mail:  
info.ps@georgfischer.com Internet: <http://www.gfps.com>