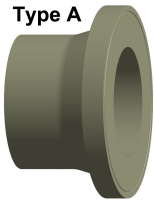
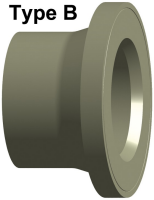


Type A



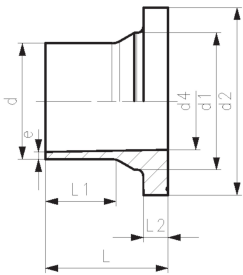
Type B



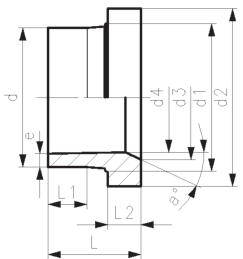
Type C



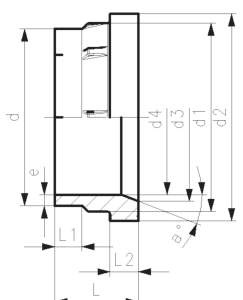
Type A



Type B



Type C



PROGEF Standard flange adaptor S8.3/SDR17.6 Combined jointing face: flat and serrated

Model:

- Material: PP-H
- Conventional butt-welding according to DVS 2207
- IR- Infrared welding compatible
- Suitable for flange connections to metric (from d110 also to ANSI/ASME B16.5)
- Up to d400, suitable for butterfly valve type 567/578 and 038/039. Above use PROGEF Standard adaptor for butterfly valves SDR17.6 (d450-d500)
- Gasket: Profile flange gasket EPDM No. 48 44 07, FKM No. 49 44 07

* Material: PP-R

**Material: PP-R, not suitable for butterfly valves

d (mm)	DN (mm)	SDR	PN (bar)	FM	Type	Code	Weight (kg)
50	40	17.6	6	IR	A	727 798 210	0.077
63	50	17.6	6	IR	A	727 798 211	0.116
75	65	17.6	6	IR	A	727 798 787	0.204
90	80	17.6	6	IR	A	727 798 788	0.273
110	100	17.6	6	IR	A	727 798 789	0.361
125	100	17.6	6	IR	B	727 798 215	0.386
140	125	17.6	6	IR	B	727 798 216	0.597
160	150	17.6	6	IR	C	727 798 217	0.669
180	150	17.6	6	IR	A	727 798 218	0.630
200	200	17.6	6	IR	C	727 798 219	1.268
225	200	17.6	6	IR	C	727 798 220	1.330
250	250	17.6	6	IR	C	727 798 421	2.130
280	250	17.6	6	IR	C	727 798 222	1.785
315	300	17.6	6	IR	C	727 798 423	2.499
*	355	350	17.6	6	C	727 798 224	4.600
*	400	400	17.6	6	C	727 798 225	6.100
**	450	500	17.6	6	C	727 798 226	12.100
**	500	500	17.6	6	C	727 798 227	12.700

d (mm)	DN (mm)	d1 (mm)	d2 (mm)	d3 (mm)	d4 (mm)	L (mm)	L1 (mm)	L2 (mm)	e (mm)	a°
50	40	60	88		44	62	32	12	3.0	
63	50	75	102		55	68	38	14	3.8	
75	65	89	122		63	80	43	16	4.5	
90	80	105	138		78	80	42	17	5.4	
110	100	125	158		94	80	42	18	6.6	
125	100	132	158	114	110	82	35	25	7.4	25.0
140	125	155	188	127	123	89	39	25	8.3	27.0
160	150	175	212	158	138	92	47	18	9.5	30.0
180	150	180	212		158	92	45	20	10.7	
200	200	232	268	203	174	100	42	24	11.9	30.0
225	200	235	268	210	196	100	42	24	13.4	30.0
250	250	285	320	252	221	120	45	26	14.8	25.0
280	250	291	320	265	247	120	45	35	16.6	30.0
315	300	335	370	300	278	150	50	51	18.7	21.0
*	355	350	373	430	346	155	70	33	21.1	21.0
*	400	400	427	482	395	162	70	36	23.7	21.0
**	450	500	514	585	400	211	105	46	26.7	4.0
**	500	500	530	585	442	217	105	46	29.7	1.5

Data sheet

valid from: 8/1/24



The technical data are not binding. They neither constitute expressly warranted characteristics nor guaranteed properties nor a guaranteed durability. They are subject to modification. Our General Terms of Sale apply.

Georg Fischer Piping Systems Ltd, Postfach, CH-8201 Schaffhausen/Switzerland Phone +41 -(0)52-631 1111 e-mail: info.ps@georgfischer.com Internet: <http://www.gfps.com>