



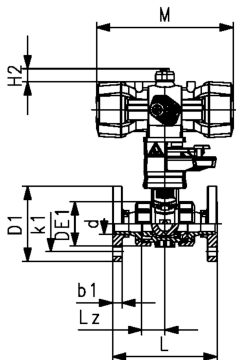
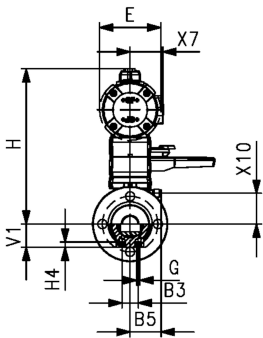
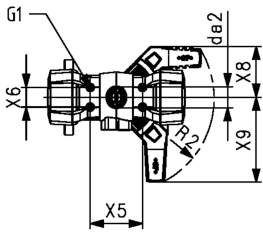
**PVC-U Ball valve type 546 Pro with PPA
FC (Fail safe to close)
With manual override
With fixed flanges JIS
4.2 bar control pressure**

Model:

- Control pressure supply through integrated NAMUR interface according VDI/VDE 3845 with 4.2 bar (60.9 psi)
- Control time 90° < 1-2s
- For easy installation and removal
- Integrated stainless steel mounting inserts
- Full plastic solution (actuator housing made of PP-GF)
- Visual position indicator
- Z-dimension, valve end and union nut are compatible with type 230 – 235 and 546 (1st Generation)

Option:

- Position feedback sensor, incl. LED feedback (DN10-50) - PNP, NPN and NAMUR
- Positioner RPC, RPC D, RPC PID
- Individual configuration of the valve



d (mm)	DN (mm)	PN (bar)	Size (inch)	kv-value (Δp=1 bar) (L/min)	EPDM Code	SP	Weight (kg)	FKM Code	SP	Weight (kg)
20	15	10	½	185	199 255 123	1	1.700	199 255 133	1	1.700
25	20	10	¾	350	199 255 124	1	1.900	199 255 134	1	1.900
32	25	10	1	1000	199 255 125	1	2.100	199 255 135	1	2.100
40	32	10	1 ¼	700	199 255 126	1	3.400	199 255 136	1	3.400
50	40	10	1 ½	1600	199 255 127	1	3.800	199 255 137	1	3.800
63	50	10	2	3100	199 255 128	1	4.900	199 255 138	1	4.900

d (mm)	Actuator	b1 (mm)	B3 (mm)	B5 (mm)	da2 (mm)	D1 (mm)	DE1 (mm)	E (mm)	G (mm)	G1 (mm)	H (mm)	H2 (mm)	H4 (mm)	k1 (mm)	L (mm)
20	PPA15	12	25	16.2	33	95	50	74	M6	M5	215	20	12	70	130
25	PPA15	12	25	17.5	33	105	58	74	M6	M5	219	20	12	75	150
32	PPA15	14	25	17.5	33	115	68	94	M8	M5	238	20	12	90	160
40	PPA40	16	45	23.3	33	140	84	94	M8	M5	244	20	15	100	180
50	PPA40	16	45	23.3	33	150	97	120	M8	M5	273	20	15	105	200
63	PPA40	18	45	24.3	33	165	124	120	M8	M5	288	20	15	165	230

d (mm)	Lz (mm)	M (mm)	R2	V1 (mm)	X5 (mm)	X6 (mm)	X7 (mm)	X8 (mm)	X9 (mm)	X10 (mm)
20	28	159	R150	27	80	30	43	78	132	38.00
25	33	159	R150	30	80	30	43	78	132	41.90
32	36	211	R150	36	80	30	51	78	132	47.00
40	43	211	R150	44	80	30	51	78	132	53.50
50	45	246	R150	51	80	30	62	78	132	62.75
63	51	246	R150	64	80	30	62	78	132	77.00

The technical data are not binding. They neither constitute expressly warranted characteristics nor guaranteed properties nor a guaranteed durability. They are subject to modification. Our General Terms of Sale apply.

Georg Fischer Piping Systems Ltd, Postfach, CH-8201 Schaffhausen/Switzerland Phone +41 -(0)52-631 1111 e-mail: info.ps@georgfischer.com Internet: <http://www.gfps.com>