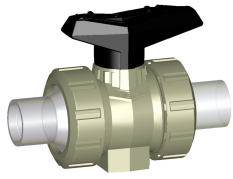
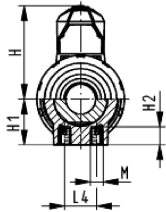
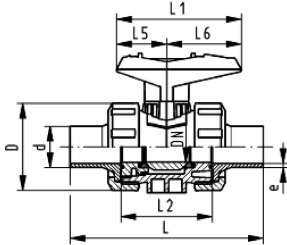


Data sheet

valid from: 6/16/25



DN10/15 - 50



Type 546 Ball Valve PROGEF Standard With PROGEF Natural Valve Ends IR/BCF Fusion Spigots

d (mm)	PN (bar)	SDR	EPDM Code	FKM Code
20	10	11	157 546 442	157 546 452
25	10	11	157 546 443	157 546 453
32	10	11	157 546 444	157 546 454
40	10	11	157 546 445	157 546 455
50	10	11	157 546 446	157 546 456
63	10	11	157 546 447	157 546 457
90	10	11	157 546 448	157 546 458

d (mm)	D (mm)	H (mm)	H1 (mm)	H2 (mm)	L (mm)	L1 (mm)	L2 (mm)	L4 (mm)	L5 (mm)	L6 (mm)	M	e (mm)	closest inch (inch)
20	50	57	27	12	130	77	56	25	32	45	M6	1.9	3/8
25	58	67	30	12	143	97	65	25	39	58	M6	2.3	3/4
32	68	73	36	12	150	97	71	25	39	58	M6	3.0	1
40	84	90	44	15	171	128	85	45	54	74	M8	3.7	1 1/4
50	97	97	51	15	191	128	89	45	54	74	M8	4.6	1 1/2
63	124	116	64	15	220	152	101	45	66	87	M8	5.8	2
90	200	161	105	15	264	270	141	70	64	206	M8	9.9	3

The technical data are not binding. They neither constitute expressly warranted characteristics nor guaranteed properties nor a guaranteed durability. They are subject to modification. Our General Terms of Sale apply.

Georg Fischer Piping Systems Ltd, Postfach, CH-8201 Schaffhausen/Switzerland Phone +41 -(0)52-631 1111 e-mail:
info.ps@georgfischer.com Internet: <http://www.gfps.com>