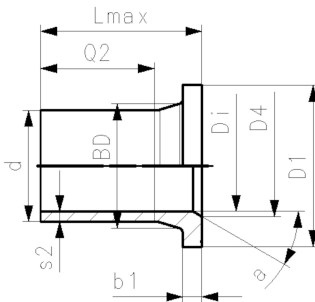
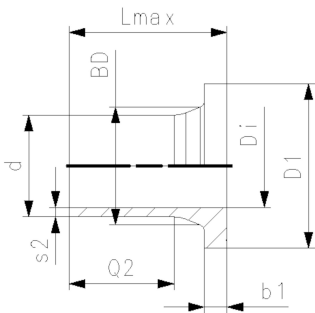


## 法兰适配器 SDR11 平面/细齿面组合



### 型号:

- For IR, butt and electrofusion welding according to DVS 2207
- Type A: without chamfer
- Type B: with chamfer
- Type 567/578 suitable for plastic butterfly valves up to DN300
- Type 565 for DN 300, the ecoFIT special flange adapter \*\* SDR11 is required
- Type 038/039/044/065 for metal butterfly valves up to DN250 suitable
- Type 038/039/044/065 for metal butterfly valves DN 300; the ecoFIT special flange adapter \*\* SDR11 is required
- For Butterfly Valves above DN 350, the ecoFIT adapters for BV SDR11 are required
- For third-party products, please check the Insertion depth of the disc dimension
- Profile seal: d20-d800 NBR, EPDM, FKM
- Flat gasket: d20-d315 EPDM, FKM
- Pressure rating: 5 bar gas / 10 bar water
- Please refer to the Online Tool: Perfect Flange Connection - GF Piping Systems (gfps.com)

\* For electrofusion welding, according to DVS 2207 and EN 1555

\*\* FM 1613 approved - PN 15

\*\*\* Machined

	d	Di	Type	DN	code	weight	Lmax	D1	D4	Q2	s2	b1	BD
	(mm)	(mm)		(mm)		(kg)	(mm)	(mm)	(mm)	(mm)	(mm)	(mm)	(mm)
	20	16	A	15	753 800 006	0,022	85,0	45		41,0	1,9	7	27
*	20	16	A	15	753 800 031	0,060	85,0	45		41,0	3,0	7	27
	25	20	A	20	753 800 007	0,037	90,5	58		62,0	2,3	9	33
*	25	20	A	20	753 800 032	0,041	90,5	58		62,0	3,0	9	33
	32	26	A	25	753 800 008	0,056	91,5	68		61,0	3,0	10	40
	40	32	A	32	753 800 009	0,081	94,5	78		61,5	3,7	11	50
	50	40	A	40	753 800 010	0,119	90,0	88		62,0	4,6	12	61
	63	51	A	50	753 800 011	0,187	98,0	102		69,0	5,8	14	75
	75	61	B	65	753 800 012	0,314	125,0	122	66	89,0	6,8	16	89
**	90	73	B	80	753 800 013	0,471	140,0	138	78	103,0	8,2	17	105
**	110	90	B	100	753 800 014	0,718	160,0	158	100	114,0	10,0	18	125
**	125	102	B	100	753 800 015	0,883	170,0	158	114	125,0	11,4	25	132
**	140	114	B	125	753 800 016	1,348	200,0	188	127	147,0	12,7	25	155
**	160	130	B	150	753 800 017	1,718	200,0	212	151	147,0	14,6	25	175
**	180	147	B	150	753 800 018	2,035	200,0	212	158	170,0	16,4	30	183
**	200	163	B	200	753 800 019	2,899	200,0	268	203	128,0	18,2	32	232
**	225	184	B	200	753 800 020	3,208	200,0	268	210	138,0	20,5	32	235
**	250	202	B	250	753 800 021	4,800	220,0	320	252	129,0	22,7	35	285
**	280	229	B	250	753 800 022	4,925	231,0	320	265	150,0	25,4	35	291
**	315	257	B	300	753 800 023	7,135	239,0	370	300	162,0	28,6	35	335
**	355	284	B	350	753 800 224	10,400	267,0	430	342	170,0	32,0	40	373
**	400	320	B	400	753 800 225	14,500	292,0	482	387	185,0	36,0	46	427
**	450	360	B	500	753 800 226	23,700	330,0	585	400	205,0	41,0	60	514
**	500	400	B	500	753 800 227	27,100	351,0	585	442	220,0	46,0	60	530
	560	458	B	600	753 800 228	39,260	370,0	685	490	240,0	50,9	60	616
	630	515	B	600	753 800 229	44,260	390,0	685	545	260,0	57,0	60	644
***	710	581	A	700	753 800 030	56,400	400,0	800		280,0	64,5	60	737
***	800	652	A	800	753 800 033	72,700	400,0	905		280,0	74,0	65	840

The technical data are not binding. They neither constitute expressly warranted characteristics nor guaranteed properties nor a guaranteed durability. They are subject to modification. Our General Terms of Sale apply.