



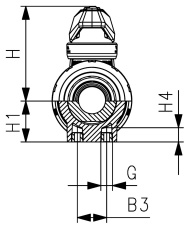
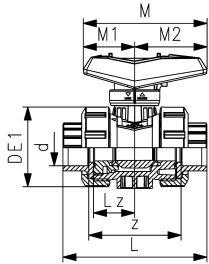
**ecoFIT Ball Valve type 546 Pro PVC-U**  
With fusion sockets PE100 ISO

**Model:**

- Lockable lever as standard
- Ball seat PTFE
- Integrated stainless steel mounting inserts
- Z-dimension, valve end and union nut **are compatible** with type 546 (1<sup>st</sup> Generation)

**Option:**

- Interface module for position feedback sensor with LED (PNP, NPN and NAMUR)
- Manual spring return lever ("Dead man") (DN10-25)
- Pneumatic or electric actuators from GF
- Individual configuration of the valve possible



d	DN	Size	PN	kv-value	EPDM	SP	Weight	FKM	SP	Weight
(mm)	(mm)	(inch)	(bar)	( $\Delta p=1$ bar)	Code		(kg)	Code		(kg)
16	10	3/8	16	71	<b>161 546 761</b>	1	0.150	<b>161 546 771</b>	1	0.150
20	15	1/2	16	185	<b>161 546 762</b>	1	0.149	<b>161 546 772</b>	1	0.151
25	20	3/4	16	350	<b>161 546 763</b>	1	0.220	<b>161 546 773</b>	1	0.220
32	25	1	16	700	<b>161 546 764</b>	1	0.310	<b>161 546 774</b>	1	0.329
40	32	1 1/4	16	1000	<b>161 546 765</b>	1	0.550	<b>161 546 775</b>	1	0.550
50	40	1 1/2	16	1600	<b>161 546 766</b>	1	0.750	<b>161 546 776</b>	1	0.750
63	50	2	16	3100	<b>161 546 767</b>	1	1.360	<b>161 546 777</b>	1	1.360

d	B3	DE1	G	H	H1	H4	L	Lz	M	M1	M2	z
(mm)	(mm)	(mm)	(mm)	(mm)	(mm)	(mm)	(mm)	(mm)	(mm)	(mm)	(mm)	(mm)
16	25	50	M6	60.5	27	12	93	28	82	35	47	67
20	25	50	M6	60.5	27	12	95	28	82	35	47	66
25	25	58	M6	74.0	30	12	109	33	106	44	62	77
32	25	68	M6	80.0	36	12	119	36	106	44	62	83
40	45	84	M8	95.0	44	15	135	43	131	57	74	99
50	45	97	M8	101.5	51	15	147	45	131	57	74	105
63	45	124	M8	116.5	64	15	168	51	152	66	86	117

The technical data are not binding. They neither constitute expressly warranted characteristics nor guaranteed properties nor a guaranteed durability. They are subject to modification. Our General Terms of Sale apply.

Georg Fischer Piping Systems Ltd, Postfach, CH-8201 Schaffhausen/Switzerland Phone +41 -(0)52-631 1111 e-mail: info.ps@georgfischer.com Internet: <http://www.gfps.com>