



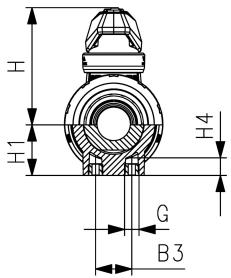
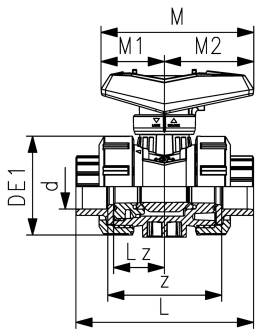
PVC-U Vented Ball Valve type 546 Pro V
With solvent cement sockets PVC-U ISO

Model:

- Lockable lever as standard
- Ball seat PTFE
- Integrated stainless steel mounting inserts
- z-dimension, valve end and union nut are compatible with type 546 (1st Generation)
- 3 mm drilled hole inside the ball
- Benefits: Safely releases trapped gas or liquid; Reduces risk of rupture, leakage, and explosion; Protects valve seals and components from pressure-related wear
- Range of use: The vented ball valve is designed for applications such as: chlorinated water, water where bleach (**sodium hypochlorite solutions**) is present, and other applications where liquids requiring out-gassing exist.
- General functions: The special vent on side of the ball allows for pressure to be released back into the closed system. (Upstream) This helps prevent potentially dangerous pressure from building up inside the valve.

Option:

- Interface module for position feedback sensor with LED (PNP, NPN and NAMUR)
- Manual spring return lever "Dead man" (DN10-25)
- Pneumatic or electric actuators from GF
- Individual configuration of valves possible



d	DN	Size	PN	kv-value	EPDM	SP	Weight	FKM	SP	Weight
(mm)	(mm)	(inch)	(bar)	($\Delta p=1$ bar)	Code		(kg)	Code		(kg)
16	10	3/8	16	70	161546061V	1	0.153	161546071V	1	0.156
20	15	1/2	16	185	161546062V	1	0.156	161546072V	1	0.158
25	20	3/4	16	350	161546063V	1	0.240	161546073V	1	0.242
32	25	1	16	700	161546064V	1	0.343	161546074V	1	0.345
40	32	1 1/4	16	1000	161546065V	1	0.610	161546075V	1	0.615
50	40	1 1/2	16	1600	161546066V	1	0.838	161546076V	1	0.844
63	50	2	16	3100	161546067V	1	1.537	161546077V	1	1.552
75	65	2 1/2	16	5000	161546068V	1	4.343	161546078V	1	3.563
90	80	3	16	7000	161546069V	1	6.184	161546079V	1	5.376
110	100	4	16	11000	161546070V	1	8.642	161546080V	1	11.600

d	B3	DE1	G	H	H1	H4	L	Lz	M	M1	M2	z
(mm)	(mm)	(mm)	(mm)	(mm)	(mm)	(mm)	(mm)	(mm)	(mm)	(mm)	(mm)	(mm)
16	25	50	M6	60.5	27	12	92	28	82	35	47	64
20	25	50	M6	60.5	27	12	95	28	82	35	47	64
25	25	58	M6	74.0	30	12	110	33	106	44	62	72
32	25	68	M6	80.0	36	12	123	36	106	44	62	79
40	45	84	M8	95.0	44	15	146	43	131	57	74	94
50	45	97	M8	101.5	51	15	157	45	131	57	74	95
63	45	124	M8	116.5	64	15	183	51	152	66	86	107
75	70	166	M8	169.0	85	15	233	68	270	64	205	144
90	70	200	M8	180.0	105	15	254	71	270	64	205	151
110	120	238	M12	194.0	123	22	301	82	326	71	255	174

The technical data are not binding. They neither constitute expressly warranted characteristics nor guaranteed properties nor a guaranteed durability. They are subject to modification. Our General Terms of Sale apply.

Georg Fischer Piping Systems Ltd, Postfach, CH-8201 Schaffhausen/Switzerland Phone +41 -(0)52-631 1111 e-mail: info.ps@georgfischer.com Internet: http://www.gfps.com