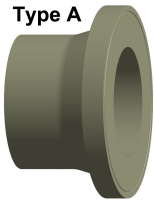
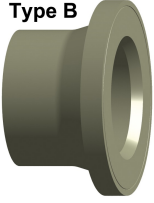


Type A



Type B



Type C



PROGEF Standard Flange adaptor
SDR17.6/PN6 JIS 10K Jointing face: flat

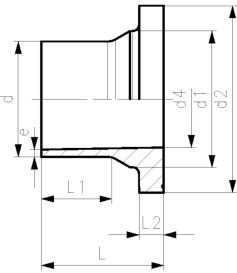
Model:

- Material: PP-H
- IR- Infrared welding compatible
- Suitable for butterfly valves type 567/578 and 037/038/039
- Conventional butt-welding according to DVS 2207

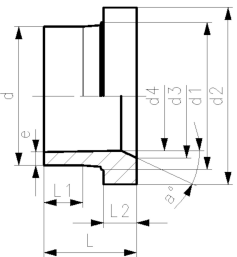
d (mm)	DN (mm)	PN (bar)	FM	Type	Code	Weight (kg)
50	40	6	IR	A	727 905 210	0.052
63	50	6	IR	A	727 905 211	0.087
75	65	6	IR	A	727 905 787	0.203
90	80	6	IR	A	727 905 788	0.273
110	100	6	IR	A	727 905 789	0.363
140	125	6	IR	B	727 905 216	0.499
160	150	6	IR	B	727 905 417	0.730
225	200	6	IR	C	727 905 420	1.420
315	300	6	IR	C	727 798 223	2.499

d (mm)	DN (mm)	d1 (mm)	d2 (mm)	d3 (mm)	d4 (mm)	L (mm)	L1 (mm)	L2 (mm)	e (mm)	a
50	40	60	73		44	59	32	9	3.2	
63	50	63	90		55	66	38	10	4.0	
75	65	89	106		65	75	43	11	4.5	
90	80	105	125		78	75	41	12	5.4	
110	100	125	150		96	75	40	13	6.6	
140	125	155	188	127	120	79	34	17	8.3	27
160	150	175	212	158	142	100	40	19	9.1	30
225	200	235	268	210	196	125	44	24	13.9	30
315	300	335	370	300	278	150	50	50	19.3	21

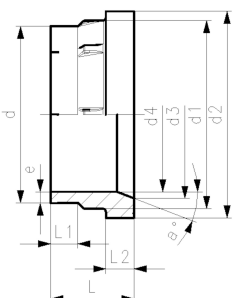
Type A



Type B



Type C



Data sheet

valid from: 5/14/25



The technical data are not binding. They neither constitute expressly warranted characteristics nor guaranteed properties nor a guaranteed durability. They are subject to modification. Our General Terms of Sale apply.

Georg Fischer Piping Systems Ltd, Postfach, CH-8201 Schaffhausen/Switzerland Phone +41 -(0)52-631 1111 e-mail:
info.ps@georgfischer.com Internet: <http://www.gfps.com>