



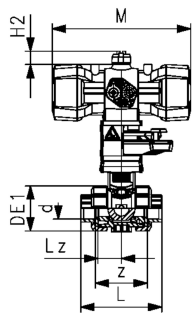
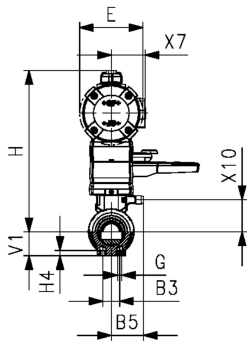
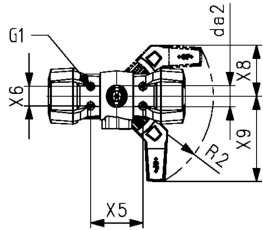
PVC-U Ball valve type 546 Pro with PPA FO (Fail Safe to Open)
With solvent cement sockets PVC-U ISO
With manual override

Model:

- Control pressure supply through integrated NAMUR interface according VDI/VDE 3845
- Full plastic solution (actuator housing made of PP-GF)
- Visual position indicator
- Integrated stainless steel mounting inserts
- z-dimension, valve end and union nut are compatible with type 546 (1st Generation)

Option:

- Position feedback through double sensor with LED (PNP, NPN and NAMUR)
- Positioner RPC, RPC D, RPC PID
- Individual configuration of valves possible



d (mm)	DN (mm)	Size (inch)	PN (bar)	kv-value ($\Delta p=1$ bar) (L/min)	EPDM Code	SP	Weight (kg)	FKM Code	SP	Weight (kg)
16	10	3/8	10	70	199 250 042	1	1.459	199 250 052	1	1.459
20	15	1/2	10	185	199 250 043	1	1.459	199 250 053	1	1.459
25	20	3/4	10	350	199 250 044	1	1.336	199 250 054	1	1.576
32	25	1	10	700	199 250 045	1	1.700	199 250 055	1	1.700
40	32	1 1/4	10	1000	199 250 046	1	2.751	199 250 056	1	2.751
50	40	1 1/2	10	1600	199 250 047	1	3.073	199 250 057	1	3.073
63	50	2	10	3100	199 250 048	1	3.360	199 250 058	1	3.931

d (mm)	Actuator	B3 (mm)	B5 (mm)	da2 (mm)	DE1 (mm)	E (mm)	G (mm)	G1 (mm)	H (mm)	H2 (mm)	H4 (mm)	L (mm)	Lz (mm)	M (mm)	R2
16	PPA08	25	16.2	33	50	74	M6	M5	215	20	12	95	28	159	R150
20	PPA08	25	16.2	33	50	74	M6	M5	215	20	12	92	28	159	R150
25	PPA08	25	17.5	33	58	74	M6	M5	219	20	12	110	33	159	R150
32	PPA15	25	17.5	33	68	94	M8	M5	238	20	12	123	36	211	R150
40	PPA15	45	23.3	33	84	94	M8	M5	244	20	15	146	43	211	R150
50	PPA40	45	23.3	33	97	120	M8	M5	273	20	15	157	45	246	R150
63	PPA40	45	24.3	33	124	120	M8	M5	288	20	15	183	51	246	R150

d (mm)	V1 (mm)	X5 (mm)	X6 (mm)	X7 (mm)	X8 (mm)	X9 (mm)	X10 (mm)	z (mm)
16	27	80	30	43	78	132	38.00	64
20	27	80	30	43	78	132	38.00	64
25	30	80	30	43	78	132	41.90	72
32	36	80	30	51	78	132	47.00	79
40	44	80	30	51	78	132	53.50	94
50	51	80	30	62	78	132	62.75	95
63	64	80	30	62	78	132	77.00	107

The technical data are not binding. They neither constitute expressly warranted characteristics nor guaranteed properties nor a guaranteed durability. They are subject to modification. Our General Terms of Sale apply.

Georg Fischer Piping Systems Ltd, Postfach, CH-8201 Schaffhausen/Switzerland Phone +41 -(0)52-631 1111 e-mail: info.ps@georgfischer.com Internet: <http://www.gfps.com>