

Data sheet

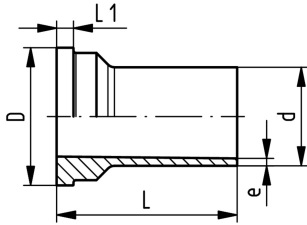
valid from: 8/2/24



SYGEF Plus union end PN16

Model:

- Suitable for Vortex Sensor
- Material: PVDF-HP
- Suitable for SYGEF Plus Union Butt Fusion
- Suitable for Diaphragm Valves Type 314 and 514



d	PN	FM	Code	Weight	L	L1	D	e
(mm)	(bar)			(kg)	(mm)	(mm)	(mm)	(mm)
20	16	BCF, IR	735 608 626	0.020	53	5	30	1.9
25	16	BCF, IR	735 608 627	0.031	56	5	39	1.9
32	16	BCF, IR	735 608 628	0.044	59	6	45	2.4
40	16	BCF, IR	735 608 629	0.069	62	6	57	2.4
50	16	BCF, IR	735 608 630	0.083	65	7	63	3.0
63	16	BCF, IR	735 608 631	0.126	68	8	78	3.0
75	16	BCF, IR	735 608 637	0.194	66	9	101	3.6
90	16	BCF, IR	735 608 638	0.189	65	9	101	4.3
110	16	BCF, IR	735 608 639	0.264	65	10	121	5.3

The technical data are not binding. They neither constitute expressly warranted characteristics nor guaranteed properties nor a guaranteed durability. They are subject to modification. Our General Terms of Sale apply.

Georg Fischer Piping Systems Ltd, Postfach, CH-8201 Schaffhausen/Switzerland Phone +41 -(0)52-631 1111 e-mail: info.ps@georgfischer.com Internet: <http://www.gfps.com>