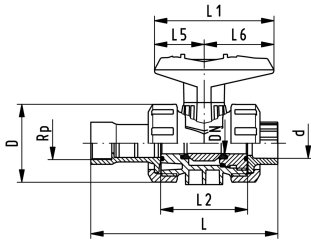


**PROGEF Standard Shipbuilding ball valve type 547**  
**With threaded socket Rp brass and fusion socket PB**

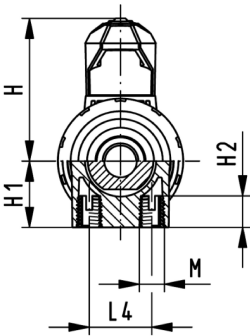
**Model:**

- Material: PP-H
- Threaded socket Rp brass with integrated check valve and filter
- For easy installation and removal
- Ball seat PTFE
- Integrated stainless steel mounting inserts



d (mm)	DN (mm)	Thread Type	Size (inch)	PN (bar)	kv-value ( $\Delta p=1$ bar) (L/min)	EPDM Code	SP	Weight (kg)
-----------	------------	----------------	----------------	-------------	--	--------------	----	----------------

16	10	Rp	½	10	40	<b>167 547 541</b>	2	0.326
20	15	Rp	½	10	40	<b>167 547 542</b>	2	0.324



d (mm)	D (mm)	H (mm)	H1 (mm)	H2 (mm)	L (mm)	L1 (mm)	L2 (mm)	L4 (mm)	L5 (mm)	L6 (mm)	M (mm)
16	50	57	27	12	120	77	56	25	32	45	6
20	50	57	27	12	121	77	56	25	32	45	6

The technical data are not binding. They neither constitute expressly warranted characteristics nor guaranteed properties nor a guaranteed durability. They are subject to modification. Our General Terms of Sale apply.

Georg Fischer Piping Systems Ltd, Postfach, CH-8201 Schaffhausen/Switzerland Phone +41 -(0)52-631 1111 e-mail:  
 info.ps@georgfischer.com Internet: <http://www.gfps.com>