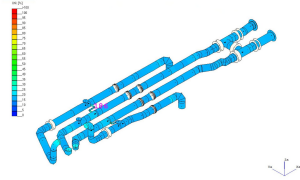


## Advanced Engineering Services

Starting at the front end of a project, GF supports engineering and designing to ensure a sustainable and efficient solution is available. Our competence in all applications and proven references throughout the entire product range ensures the highest management during project planning and execution. Our global footprint is the perfect support platform for professionals all around the world.

### Technical Data:

- Specification design, review and adherence
- Bracketing support and layout calculations
- Hydraulic calculations and modelling
- Dynamic mechanical stress analysis
- Static evidence calculations
- Seismic calculations
- Buried pipe load calculations
- Finite Element Analysis (FEM)
- CO2 sustainability calculations



Description	Code
Advanced Engineering Services Hourly Rate	<b>700 900 103</b>

The technical data are not binding. They neither constitute expressly warranted characteristics nor guaranteed properties nor a guaranteed durability. They are subject to modification. Our General Terms of Sale apply.

Georg Fischer Piping Systems Ltd, Postfach, CH-8201 Schaffhausen/Switzerland Phone +41 -(0)52-631 1111 e-mail: info.ps@georgfischer.com Internet: <http://www.gfps.com>