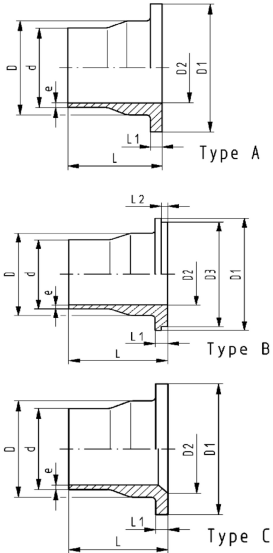




SYGEF Plus Flange adaptor with jointing face serrated
SDR21/PN16
High Purity clean-room product Class 5 (100)

Model:

- Material: PVDF-HP
- For dimensions with no special ANSI code, the ISO code is suitable/ identical to ANSI



d (mm)	DN (mm)	PN (bar)	SDR	FM	Type	Standard	Code	Weight (kg)
20	15	16	21	BCF, IR	A	ISO	735 798 831	0.029
25	20	16	21	BCF, IR	B	ISO	735 798 832	0.044
25	20	16	21	BCF, IR	A	ANSI	735 798 882	0.043
32	25	16	21	BCF, IR	B	ISO	735 798 833	0.070
32	25	16	21	BCF, IR	A	ANSI	735 798 883	0.067
40	32	16	21	BCF, IR	B	ISO	735 798 834	0.096
40	32	16	21	BCF, IR	A	ANSI	735 798 884	0.089
50	40	16	21	BCF, IR	B	ISO	735 798 835	0.136
50	40	16	21	BCF, IR	A	ANSI	735 798 885	0.130
63	50	16	21	BCF, IR	A	ISO	735 798 836	0.198
75	65	16	21	BCF, IR	A	ISO	735 798 837	0.311
90	80	16	21	BCF, IR	B	ISO	735 798 838	0.387
90	80	16	21	BCF, IR	A	ANSI	735 798 886	0.377
110	100	16	21	BCF, IR	C	ISO	735 798 839	0.555
140	125	16	21	IR	C	ISO	735 798 841	0.887
160	150	16	21	IR	C	ISO	735 798 842	1.171
200	200	16	21	IR	C	ISO	735 798 844	2.139
225	200	16	21	IR	C	ISO	735 798 845	2.064
250	250	16	21	IR	C	ISO	735 798 846	3.658
280	250	16	21	IR	C	ISO	735 798 847	3.586
315	300	16	21	IR	C	ISO	735 798 848	5.028

d (mm)	L (mm)	L1 (mm)	L2 (mm)	D (mm)	D1 (mm)	D2 (mm)	D3 (mm)	e (mm)
20	54	6		26	45	15		1.9
25	56	7	4	32	58	20	54	1.9
25	56	7		32	54	20		1.9
32	58	7	4	40	68	26	63	2.4
32	58	7		40	63	26		2.4
40	68	8	4	49	78	34	73	2.4
40	68	8		49	73	34		2.4
50	69	8	4	60	88	43	82	3.0
50	69	8		60	82	43		3.0
63	72	9		75	102	56		3.0
75	80	10		89	122	66		3.6
90	81	12	4	105	138	78	133	4.3
90	81	12		105	133	78		4.3
110	81	13		125	158	100		5.3
140	90	16		155	188	127		6.7
160	93	17		175	212	151		7.7
200	102	22		232	268	207		9.6
225	102	22		235	268	207		10.8
250	122	25		285	320	249		11.9
280	122	25		291	320	249		13.4
315	124	28		335	370	300		15.0

The technical data are not binding. They neither constitute expressly warranted characteristics nor guaranteed properties nor a guaranteed durability. They are subject to modification. Our General Terms of Sale apply.

Data sheet

valid from: 4/9/25



Georg Fischer Piping Systems Ltd, Postfach, CH-8201 Schaffhausen/Switzerland Phone +41 -(0)52-631 1111 e-mail:
info.ps@georgfischer.com Internet: <http://www.gfps.com>