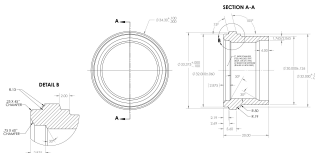


**FABRICATED MJ ADAPTERS: MJ Adapter
PE4710
IPS/DIPS**

Please call for more information on pricing, availability, other sizes and dimensions.
Note: Beveled for Butterfly Valves available upon request. Standard 45° bevel unless otherwise specified by customer. Due to variations in valve dimensions, the installer should verify proper function of the valve at the time of installation.

- Certified to NSF/ANSI/CAN-61-G
- Meets AWWA C906
- Meets ASTM D3261



Size (inch)	IPS/DIPS	SDR	GF Code	weight (lb)
30	IPS	11	360 017 820	218.9
30	IPS	17	360 017 821	196.0
30	DIPS	9	360 017 697	256.4
30	DIPS	11	360 017 698	222.9
36	IPS	9	360 060 312	319.6
36	IPS	11	360 017 822	316.0
36	IPS	17	360 017 823	248.5
36	DIPS	11	360 017 700	302.3
36	DIPS	26	360 017 701	0.0
42	IPS	11	360 061 119	457.4
42	DIPS	11	360 028 848	492.8
48	IPS	17	360 032 203	442.5

The technical data are not binding. They neither constitute expressly warranted characteristics nor guaranteed properties nor a guaranteed durability. They are subject to modification. Our General Terms of Sale apply.

Georg Fischer Piping Systems Ltd, Postfach, CH-8201 Schaffhausen/Switzerland Phone +41 -(0)52-631 1111 e-mail:
info.ps@georgfischer.com Internet: <http://www.gfps.com>