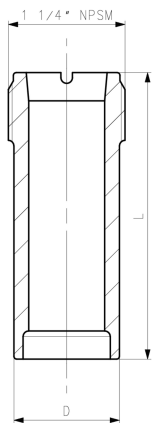


SYGEF Standard installation fitting type 314



Attention:

- pressure rate depends on quality of hot gas back welding
- please consult the instruction manual
- Installation by trained and certified welders only
- only for pressureless or low pressure application
- pH sensors can also be used for dimensions above d180/DN150 and below d75/DN65 with 735 314 000 The length might have to be adjusted (sensor has to touch the medium)

Range of use:

- Compatible Signet pH/ORP sensors: type 2724, 2725, 2726, 2734, 2736, 2735
- Compatible Signet flow sensors: type 2551, 2537, 515, 8510, 2536, 8512

Model:

- For conventional hot gas back welding according to DVS 2207 part 3
- Threaded outlet 1 1/4" NPSM
- Material: PVDF

d	DN1	DN2	Code	Weight	Insertion Sen- sor Length	D	L
(mm)	(mm)	(mm)		(kg)		(mm)	(mm)
75 - 180	65	150	735 314 000	0.069	X0 (DN15 – DN100, 1/2" to 4")	38	68
200 - 355	200	350	735 314 001	0.100	X1 (DN125 – DN200, 5" to 8")	38	102
400 - 630	350	600	735 314 002	0.173	X2 (DN250 – DN900, 10" to 36")	38	178

The technical data are not binding. They neither constitute expressly warranted characteristics nor guaranteed properties nor a guaranteed durability. They are subject to modification. Our General Terms of Sale apply.

Georg Fischer Piping Systems Ltd, Postfach, CH-8201 Schaffhausen/Switzerland Phone +41 -(0)52-631 1111 e-mail: info.ps@georgfischer.com Internet: <http://www.gfps.com>