



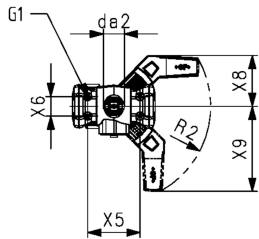
**PVC-U Ball valve type 546 Pro with PPA  
DA (Double Acting)  
With threaded sockets PVC-U ISO/JIS Rc  
With manual override**

**Model:**

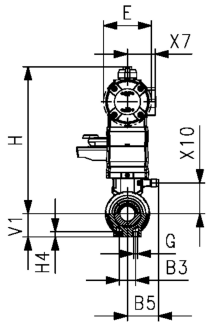
- Control pressure supply through integrated NAMUR interface according VDI/VDE 3845
- Full plastic solution (actuator housing made of PP-GF)
- Visual position indicator
- Integrated stainless steel mounting inserts
- z-dimension, valve end and union nut are compatible with type 546 (1st Generation)

**Option:**

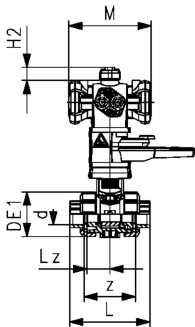
- Position feedback through double sensor with LED (PNP, NPN and NAMUR)
- Positioner RPC, RPC D, RPC PID
- Individual configuration of valves possible



d (mm)	DN (mm)	PN (bar)	Size (inch)	kv-value ( $\Delta p=1$ bar) (L/min)	EPDM Code	SP	Weight (kg)	FKM Code	SP	Weight (kg)
20	15	10	½	185	199 255 583	1	1.500	199 255 593	1	1.500
25	20	10	¾	350	199 255 584	1	1.600	199 255 594	1	1.600
32	25	10	1	700	199 255 585	1	1.700	199 255 595	1	1.700
40	32	10	1 ¼	1000	199 255 586	1	2.800	199 255 596	1	2.800
50	40	10	1 ½	1600	199 255 587	1	3.100	199 255 597	1	3.100
63	50	10	2	3100	199 255 588	1	4.000	199 255 598	1	4.000



d (mm)	Actuator	B3 (mm)	B5 (mm)	da2 (mm)	DE1 (mm)	E (mm)	G (mm)	G1 (mm)	H (mm)	H2 (mm)	H4 (mm)	L (mm)	Lz (mm)	M (mm)	R2
20	PPA08	25	16.2	33	50	74	M6	M5	215	20	12	100	28	128	R150
25	PPA08	25	17.5	33	58	74	M6	M5	219	20	12	114	33	128	R150
32	PPA08	25	17.5	33	68	94	M6	M5	238	20	12	127	36	128	R150
40	PPA15	45	23.3	33	84	94	M8	M5	244	20	15	146	43	159	R150
50	PPA15	45	23.3	33	97	120	M8	M5	273	20	15	152	45	159	R150
63	PPA40	45	24.3	33	124	120	M8	M5	288	20	15	177	51	184	R150



d (mm)	V1 (mm)	X5 (mm)	X6 (mm)	X7 (mm)	X8 (mm)	X9 (mm)	X10 (mm)	z (mm)	Thread Type
20	27	80	30	43	78	132	38.0	67	Rc
25	30	80	30	43	78	132	41.9	78	Rc
32	36	80	30	51	78	132	47.0	85	Rc
40	44	80	30	51	78	132	53.5	100	Rc
50	51	80	30	62	78	132	62.8	106	Rc
63	64	80	30	62	78	132	77.0	121	Rc

The technical data are not binding. They neither constitute expressly warranted characteristics nor guaranteed properties nor a guaranteed durability. They are subject to modification. Our General Terms of Sale apply.

Georg Fischer Piping Systems Ltd, Postfach, CH-8201 Schaffhausen/Switzerland Phone +41 -(0)52-631 1111 e-mail: info.ps@georgfischer.com Internet: <http://www.gfps.com>