



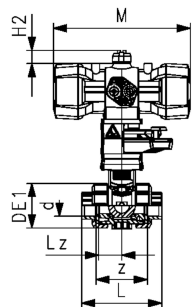
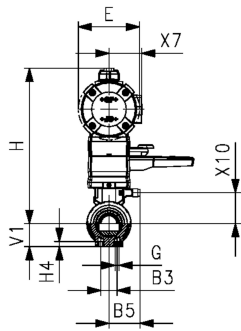
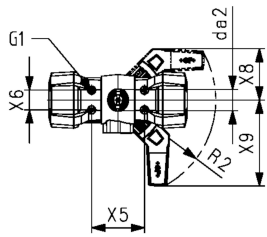
**PVC-C Ball valve type 546 Pro with PPA  
FC (Fail Safe to Close)  
With solvent cement sockets PVC-C JIS  
With manual override**

**Model:**

- Control pressure supply through integrated NAMUR interface according VDI/VDE 3845
- Full plastic solution (actuator housing made of PP-GF)
- Visual position indicator
- Integrated stainless steel mounting inserts
- z-dimension, valve end and union nut are compatible with type 546 (1st Generation)

**Option:**

- Position feedback through double sensor with LED (PNP, NPN and NAMUR)
- Positioner RPC, RPC D, RPC PID
- Individual configuration of valves possible



d (mm)	DN (mm)	Size (inch)	PN (bar)	kv-value ( $\Delta p=1$ bar) (L/min)	EPDM Code	Weight (kg)	FKM Code	Weight (kg)
16	10	3/8	10	70	199 255 242	1.500	199 255 252	1.500
20	15	1/2	10	185	199 255 243	1.500	199 255 253	1.500
25	20	3/4	10	350	199 255 244	1.600	199 255 254	1.600
32	25	1	10	700	199 255 245	1.700	199 255 255	1.500
40	32	1 1/4	10	1000	199 255 246	2.800	199 255 256	2.800
50	40	1 1/2	10	1600	199 255 247	3.100	199 255 257	2.751
63	50	2	10	3100	199 255 248	4.000	199 255 258	3.555

d (mm)	Actuator	B3 (mm)	B5 (mm)	da2 (mm)	DE1 (mm)	E (mm)	G (mm)	G1 (mm)	H (mm)	H2 (mm)	H4 (mm)	L (mm)	Lz (mm)	M (mm)	R2
16	PPA08	25	16.2	33	50	74	M6	M5	215	20	12	92	28	159	R150
20	PPA15	25	16.2	33	50	74	M6	M5	215	20	12	95	28	159	R150
25	PPA15	25	17.5	33	58	74	M6	M5	219	20	12	110	33	159	R150
32	PPA15	25	17.5	33	68	94	M6	M5	238	20	12	123	36	211	R150
40	PPA40	45	23.3	33	84	94	M8	M5	244	20	15	146	43	211	R150
50	PPA40	45	23.3	33	97	120	M8	M5	273	20	15	157	45	246	R150
63	PPA40	45	24.3	33	124	120	M8	M5	288	20	15	183	51	246	R150

d (mm)	V1 (mm)	X5 (mm)	X6 (mm)	X7 (mm)	X8 (mm)	X9 (mm)	X10 (mm)	z (mm)
16	27	80	30	43	78	132	38.00	64
20	27	80	30	43	78	132	38.00	64
25	30	80	30	43	78	132	41.90	72
32	36	80	30	51	78	132	47.00	79
40	44	80	30	51	78	132	53.50	94
50	51	80	30	62	78	132	62.75	95
63	64	80	30	62	78	132	77.00	107

The technical data are not binding. They neither constitute expressly warranted characteristics nor guaranteed properties nor a guaranteed durability. They are subject to modification. Our General Terms of Sale apply.

Georg Fischer Piping Systems Ltd, Postfach, CH-8201 Schaffhausen/Switzerland Phone +41 -(0)52-631 1111 e-mail:  
info.ps@georgfischer.com Internet: <http://www.gfps.com>