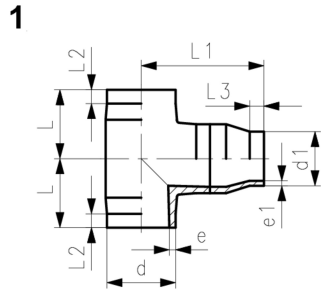
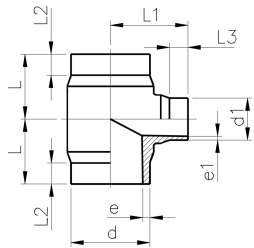




**PROGEF Plus Tee 90° reduced
SDR11/PN10**

Model:

- Cleaned and double bagged
- Conventional butt-welding according to DVS 2207
- IR = Infrared welding compatible
- Material: PP-H



	d	d1	PN	FM	Code	Weight	L	L1	L2	L3	e	e1
	(mm)	(mm)	(bar)			(kg)	(mm)	(mm)	(mm)	(mm)	(mm)	(mm)
	63	32	10	IR	727 208 251	0.159	65	70	25	25	5.8	2.9
	63	40	10	IR	727 208 250	0.175	65	70	25	25	5.8	3.7
	63	50	10	IR	727 208 252	0.174	65	70	25	25	5.8	4.6
	75	32	10	IR	727 208 253	0.240	70	75	25	25	6.8	2.9
	75	50	10	IR	727 208 254	0.248	70	75	25	25	6.8	4.6
	75	63	10	IR	727 208 255	0.260	70	75	25	25	6.8	5.8
	90	50	10	IR	727 208 257	0.410	80	85	25	25	8.2	4.6
	90	63	10	IR	727 208 258	0.431	80	85	25	25	8.2	5.8
	90	75	10	IR	727 208 259	0.435	80	85	25	25	8.2	6.8
	110	32	10	IR	727 208 260	0.648	90	95	30	25	10.0	2.9
	110	50	10	IR	727 208 261	0.662	90	95	30	25	10.0	4.6
	110	63	10	IR	727 208 262	0.669	90	95	30	25	10.0	5.8
	110	75	10	IR	727 208 263	0.689	90	95	30	25	10.0	6.8
	110	90	10	IR	727 208 264	0.694	90	95	30	25	10.0	8.2
1	125	63	10	IR	727 208 265	1.680	125	230	25	16	11.4	5.8
1	125	90	10	IR	727 208 466	1.700	125	225	25	40	11.4	8.2
1	125	110	10	IR	727 208 267	1.700	125	217	25	30	11.4	10.0
1	140	75	10	IR	727 208 468	2.400	140	245	28	41	11.4	10.0
1	140	90	10	IR	727 208 469	2.500	140	240	28	40	12.7	6.8
1	140	110	10	IR	727 208 270	2.380	140	242	28	33	12.7	10.0
	160	125	10	IR	727 208 275	3.500	160	272	28	32	14.6	11.4
	200	160	10	IR	727 208 285	6.600	200	332	35	40	18.2	14.6
	200	180	10	IR	727 208 486	6.900	200	335	35	45	12.7	8.2
	160	63	10	IR	727 208 271	2.125	142	135	50	30	14.6	5.8
	160	75	10	IR	727 208 272	2.140	142	135	50	30	14.6	6.8
	160	90	10	IR	727 208 273	2.164	142	135	50	30	14.6	8.2
	160	110	10	IR	727 208 274	2.200	142	135	50	30	14.6	10.0
	225	90	10	IR	727 208 288	4.597	155	165	40	30	20.5	8.2
	225	110	10	IR	727 208 289	4.524	155	165	40	30	20.5	10.0
	225	160	10	IR	727 208 291	4.710	155	165	40	30	20.5	14.6
1	250	160	10	IR	727 208 493	4.530	227	387	68	53	22.7	14.6

The technical data are not binding. They neither constitute expressly warranted characteristics nor guaranteed properties nor a guaranteed durability. They are subject to modification. Our General Terms of Sale apply.

Georg Fischer Piping Systems Ltd, Postfach, CH-8201 Schaffhausen/Switzerland Phone +41 -(0)52-631 1111 e-mail: info.ps@georgfischer.com Internet: <http://www.gfps.com>