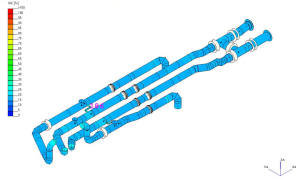


## Advanced Engineering Services

Starting at the front end of a project, GF supports engineering and designing to ensure a sustainable and efficient solution is available. Our competence in all applications and proven references throughout the entire product range ensures the highest management during project planning and execution. Our global footprint is the perfect support platform for professionals all around the world.

### Technical Data:

- Total Plastic solution for material, product and size
- Material selection vs chemical analysis vs life expectancy
- Pipe class documentation support and detailing
- Specification design, review and adherence
- Bracketing support and layout calculations
- Metal to plastic drawing take offs
- Hydraulic calculations and modelling
- Dynamic mechanical stress analysis
- Static evidence calculations
- Seismic calculations
- Finite Element Analysis (FEM)
- GF certified on-site trainings&inspections
- CO2 sustainability calculations
- Audited testing laboratories



Type	Part No.
Advanced Engineering Services Hourly Rate	<b>700 900 103</b>

The technical data are not binding. They neither constitute expressly warranted characteristics nor guaranteed properties nor a guaranteed durability. They are subject to modification. Our General Terms of Sale apply.

Georg Fischer Piping Systems Ltd, Postfach, CH-8201 Schaffhausen/Switzerland

Phone +41 -(0)52-631 1111

e-mail: [info.ps@georgfischer.com](mailto:info.ps@georgfischer.com)

Internet: <http://www.gfps.com>