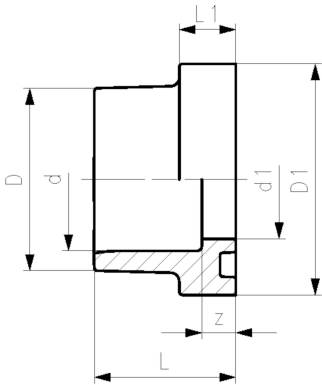




PROGEF Standard flange adaptor
Joining face with o-ring groove

Model:

- Material: PP-H
- Counterpart: Flange adaptor flat/serrated, No. 27 79 02
- Flanges: PP with steel core, No. 27 70 02 (mm) or No. 27 70 12 (ANSI), PP-V, No. 27 70 04
- Gasket: O-ring EPDM No. 48 41 01, FKM No. 49 41 01



d	DN	PN	Code	Weight	D	D1	d1	L	L1	z
(mm)	(mm)	(bar)		(kg)	(mm)	(mm)	(mm)	(mm)	(mm)	(mm)
20	15	10	727 810 106	0.007	27	34	16	22	9	8
25	20	10	727 810 107	0.012	33	41	21	24	10	8
32	25	10	727 810 108	0.018	41	50	28	26	10	8
40	32	10	727 810 109	0.027	50	61	36	30	13	10
50	40	10	727 810 110	0.043	61	73	45	33	13	10
63	50	10	727 810 111	0.070	76	90	57	37	14	10
75	65	10	727 810 112	0.105	90	106	69	40	15	10
90	80	10	727 810 113	0.170	108	125	84	47	16	12
110	100	10	727 810 114	0.263	131	150	100	55	18	13

The technical data are not binding. They neither constitute expressly warranted characteristics nor guaranteed properties nor a guaranteed durability. They are subject to modification. Our General Terms of Sale apply.

Georg Fischer Piping Systems Ltd, Postfach, CH-8201 Schaffhausen/Switzerland Phone +41 -(0)52-631 1111 e-mail: info.ps@georgfischer.com Internet: <http://www.gfps.com>