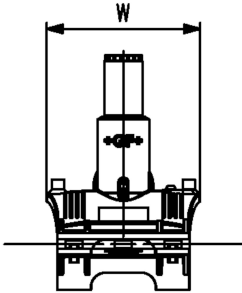
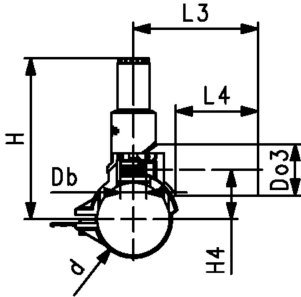




## Tapping saddle 自鑽鞍座 (附鑽刀) Monobloc version

- 10 bar Gas / 16 bar Water
- With integrated cutter to tap live mains under pressure
- Complete with moulded-on lower part
- 4 mm pin connectors
- Limited path fusion indicators
- Long fusion outlet
- O-ring-sealed screw cap



d (mm)	Do3 (mm)	DN (mm)	PN (bar)	code	weight (kg)
63	20	50	16	<b>193 131 932</b>	0,368
63	25	50	16	<b>193 131 933</b>	0,393
63	32	50	16	<b>193 131 934</b>	0,376
90	20	80	16	<b>193 131 952</b>	0,494
90	25	80	16	<b>193 131 953</b>	0,503
90	32	80	16	<b>193 131 954</b>	0,505
90	63	80	16	<b>193 131 957</b>	0,667
110	20	100	16	<b>193 131 962</b>	0,560
110	25	100	16	<b>193 131 963</b>	0,570
110	32	100	16	<b>193 131 964</b>	0,574
110	63	100	16	<b>193 131 967</b>	0,684
125	20	100	16	<b>193 131 972</b>	0,562
125	25	100	16	<b>193 131 973</b>	0,552
125	32	100	16	<b>193 131 974</b>	0,574
125	63	100	16	<b>193 131 977</b>	0,704
160	20	150	16	<b>193 131 992</b>	0,631
160	25	150	16	<b>193 131 993</b>	0,641
160	32	150	16	<b>193 131 994</b>	0,648
160	63	150	16	<b>193 131 997</b>	0,794

d (mm)	L3 (mm)	L4 (mm)	Db (mm)	W (mm)	H (mm)	H4 (mm)	Suitable for
63	110	76	25	144	146	44	SDR Pipe 9-11
63	110	76	25	144	146	44	SDR Pipe 9-11
63	110	76	25	144	146	44	SDR Pipe 9-11
90	115	76	32	162	198	61	SDR Pipe 9-17.6
90	115	76	32	162	198	61	SDR Pipe 9-17.6
90	115	76	32	162	198	61	SDR Pipe 9-17.6
90	115	76	32	162	198	61	SDR Pipe 9-17.6
110	115	76	32	162	208	71	SDR Pipe 9-17.6
110	115	76	32	162	208	71	SDR Pipe 9-17.6
110	125	76	32	162	208	71	SDR Pipe 9-17.6
110	160	100	32	162	208	71	SDR Pipe 9-17.6
125	120	76	32	162	216	79	SDR Pipe 9-17.6
125	120	76	32	162	216	79	SDR Pipe 9-17.6
125	120	76	32	162	216	79	SDR Pipe 9-17.6
125	120	76	32	162	216	79	SDR Pipe 9-17.6
160	120	76	32	162	233	96	SDR Pipe 11-17.6
160	125	76	32	162	233	96	SDR Pipe 11-17.6
160	130	76	32	162	233	96	SDR Pipe 11-17.6
160	170	100	32	162	233	96	SDR Pipe 11-17.6

The technical data are not binding. They neither constitute expressly warranted characteristics nor guaranteed properties nor a guaranteed durability. They are subject to modification. Our General Terms of Sale apply.

# Data sheet

valid from: 2026/4/5



---

Georg Fischer Piping Systems Ltd, Postfach, CH-8201 Schaffhausen/Switzerland Phone +41 -(0)52-631 1111 e-mail:  
info.ps@georgfischer.com Internet: <http://www.gfps.com>