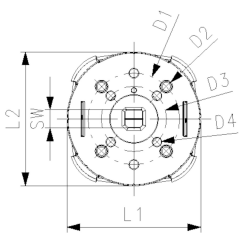
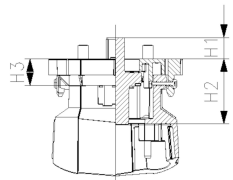
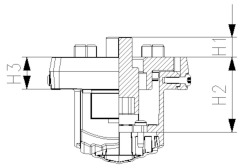
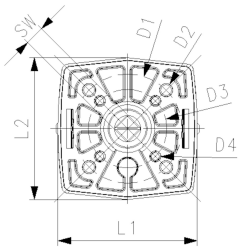




**Interface module with diagonal square head for ISO5211 actuators  
For Ball Valve Type 543 Pro & 546 Pro**

**Model:**

- Interface module connects non-GF actuators and ball valves
- Norm interface according to ISO 2023:5211 with diagonal square head
- Inclusive transparent labelling clip
- No possibility for position feedback through double sensor with LED



DN (mm)	d (mm)	Interface ISO5211 Code	SP	Weight (kg)
DN 10-15 SW09, F03/F05	16 - 20	<b>198 546 122</b>	1	0.111
DN 10-15 SW11/14, F03/F05	16 - 20	<b>198 546 123</b>	1	0.111
DN 20-25 SW09, F03/F05	25 - 32	<b>198 546 124</b>	1	0.120
DN 20-25 SW11/14, F03/F05	25 - 32	<b>198 546 125</b>	1	0.120
DN 32-40 SW11/14, F05	40 - 50	<b>198 546 126</b>	1	0.130
DN 50 SW11/14, F05	63	<b>198 546 127</b>	1	0.130

DN (mm)	H1 (mm)	H2 (mm)	H3 (mm)	L1 (mm)	L2 (mm)	D1 (mm)	D2 (mm)	D3 (mm)	D4 (mm)
DN 10-15 SW09, F03/F05	9	35	15	65	65	50	M6	36	M5
DN 10-15 SW11/14, F03/F05	11	35	15	65	65	50	M6	36	M5
DN 20-25 SW09, F03/F05	9	35	15	65	65	50	M6	36	M5
DN 20-25 SW11/14, F03/F05	11	35	15	65	65	50	M6	36	M5
DN 32-40 SW11/14, F05	11	33	13	72	79	50	M6	36	M5
DN 50 SW11/14, F05	11	36	13	72	79	50	M6	36	M5

The technical data are not binding. They neither constitute expressly warranted characteristics nor guaranteed properties nor a guaranteed durability. They are subject to modification. Our General Terms of Sale apply.

Georg Fischer Piping Systems Ltd, Postfach, CH-8201 Schaffhausen/Switzerland Phone +41 -(0)52-631 1111 e-mail: info.ps@georgfischer.com Internet: <http://www.gfps.com>