



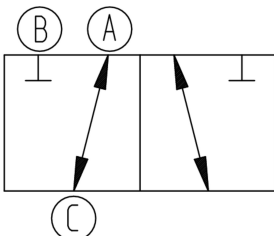
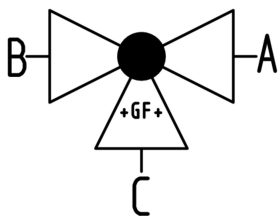
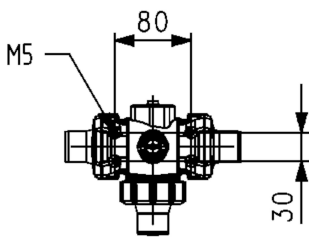
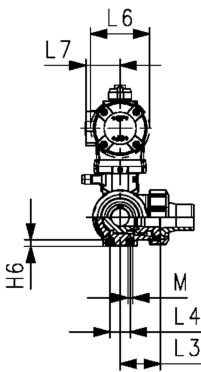
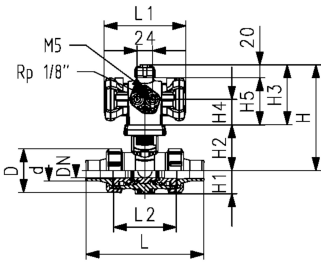
**PROGEF Standard 3-Way ball valve type 543 Pro P**  
**Horizontal/L-port**  
**DA (Double acting)**  
**Without manual override**  
**With butt fusion spigots IR-Plus SDR11 metric**

**Model:**

- Material: PP-H
- Control pressure supply through integrated NAMUR interface according VDI/VDE 3845 with 5.6 bar (81.2 psi)
- Basic position A-C opened, activated position B-C opened, see flow scheme
- Control time 90° <) 1-2s
- For easy installation and removal
- Integrated stainless steel mounting inserts
- Full plastic solution (actuator housing made of PP-GF)
- Visual position indicator
- Z-dimension, valve end and union nut are compatible with types 285 – 288 and 543 (1st Generation)

**Option:**

- Position feedback sensor, incl. LED feedback (DN10-50) - PNP, NPN and NAMUR
- Positioner RPC, RPC D, RPC PID
- Individual configuration of the valve



d (mm)	DN (mm)	Size (inch)	PN (bar)	kv-value (Δp=1 bar) (l/min)	EPDM Code	SP	Weight (kg)	FKM Code	SP	Weight (kg)
20	15	½	10	75	<b>199 296 243</b>	1	0.851	<b>199 296 253</b>	1	0.851
25	20	¾	10	150	<b>199 296 244</b>	1	0.945	<b>199 296 254</b>	1	0.945
32	25	1	10	280	<b>199 296 245</b>	1	1.075	<b>199 296 255</b>	1	1.075
40	32	1 ¼	10	480	<b>199 296 246</b>	1	1.807	<b>199 296 256</b>	1	1.807
50	40	1 ½	10	620	<b>199 296 247</b>	1	2.130	<b>199 296 257</b>	1	2.130
63	50	2	10	1230	<b>199 296 248</b>	1	3.078	<b>199 296 258</b>	1	3.082

d (mm)	Actuator	D (mm)	H (mm)	H1 (mm)	H2 (mm)	H3 (mm)	H4 (mm)	H5 (mm)	H6 (mm)	L (mm)	L1 (mm)	L2 (mm)	L3 (mm)	L4 (mm)	L6 (mm)
20	PPA08	50	157	28	62	95	41	75	8	146	128	72	36	25	74
25	PPA08	58	166	32	71	95	41	75	8	163	128	85	43	25	74
32	PPA08	68	166	36	71	95	41	75	8	178	128	98	49	25	74
40	PPA15	84	192	45	84	108	45	88	9	204	165	118	59	45	94
50	PPA15	97	192	51	84	108	45	88	9	237	165	135	68	45	94
63	PPA40	124	237	65	106	131	56	111	9	296	184	176	88	45	120

d (mm)	L7 (mm)	M	closest inch (inch)
20	32	6	½
25	32	6	¾
32	32	6	1
40	38	8	1 ¼
50	38	8	1 ½
63	47	8	2

# Data sheet

valid from: 4/3/25

---



The technical data are not binding. They neither constitute expressly warranted characteristics nor guaranteed properties nor a guaranteed durability. They are subject to modification. Our General Terms of Sale apply.

Georg Fischer Piping Systems Ltd, Postfach, CH-8201 Schaffhausen/Switzerland Phone +41 -(0)52-631 1111 e-mail:  
info.ps@georgfischer.com Internet: <http://www.gfps.com>