



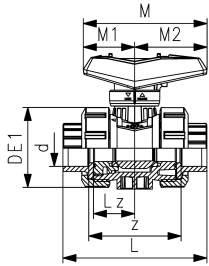
**PVC-C Ball Valve type 546 Pro**  
With solvent cement sockets PVC-C ISO

**Model:**

- Lockable lever as standard
- Ball seat PTFE
- Integrated stainless steel mounting inserts
- z-dimension, valve end and union nut are compatible with type 546 (1st Generation)

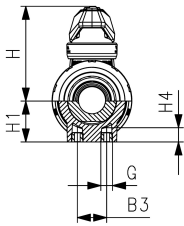
**Option:**

- Interface module for position feedback sensor with LED (PNP, NPN and NAMUR)
- Manual spring return lever "Dead man" (DN10-25)
- Pneumatic or electric actuators from GF
- Individual configuration of valves possible



d	DN	Size	PN	kv-value	EPDM	SP	Weight	FKM	SP	Weight
(mm)	(mm)	(inch)	(bar)	( $\Delta p=1$ bar)	Code		(kg)	Code		(kg)
75	65	2 1/2	16	5000	<b>163 546 088</b>	1	4.900	<b>163 546 098</b>	1	4.900
90	80	3	16	7000	<b>163 546 089</b>	1	6.647	<b>163 546 099</b>	1	7.400
110	100	4	16	11000	<b>163 546 090</b>	1	11.600	<b>163 546 100</b>	1	11.600

d	B3	DE1	G	H	H1	H4	L	Lz	M	M1	M2	z
(mm)	(mm)	(mm)	(mm)	(mm)	(mm)	(mm)	(mm)	(mm)	(mm)	(mm)	(mm)	(mm)
75	70	75	M8	169	85	15	233	68	270	64	205	144
90	70	90	M8	180	105	15	254	71	270	64	205	151
110	120	110	M12	194	123	22	301	82	326	71	255	174



The technical data are not binding. They neither constitute expressly warranted characteristics nor guaranteed properties nor a guaranteed durability. They are subject to modification. Our General Terms of Sale apply.

Georg Fischer Piping Systems Ltd, Postfach, CH-8201 Schaffhausen/Switzerland Phone +41 -(0)52-631 1111 e-mail:

info.ps@georgfischer.com Internet: <http://www.gfps.com>