



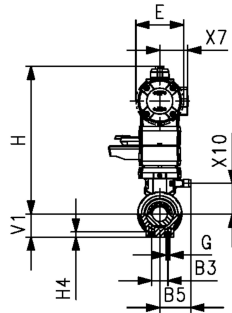
SYGEF 标准型
气动球阀546Pro PVDF DA (双作用)
带应急手柄
带红外焊对焊端 IR-Plus 公制

型号:

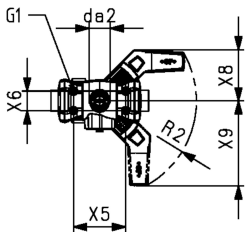
- Namur标准气源接口满足VDI/VDE 3845
- 整体耐腐蚀塑料方案(气动执行器外壳材质 PP-GF)
- 带可视机械式位置指示
- 内置不锈钢固定螺孔
- Z尺寸、阀端和活接螺母与546型球阀 (第1代) 兼容

选项:

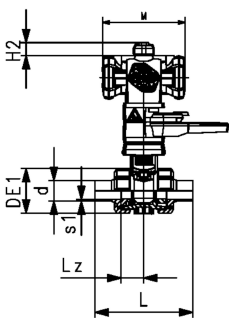
- 可配Double Sensor阀位反馈器, 带LED指示, 信号类型PNP, NPN和Namur
- 可选配定位器RPC, RPC D, RPC PID
- 可提供其他阀门配置



d	DN	PN	Size	kv-value	FKM	SP	weight
(mm)	(mm)	(bar)	(inch)	($\Delta p=1$ bar)	code		(kg)
				(l/min)			
20	15	10	1/2	185	199 252 793	1	1,200
25	20	10	3/4	350	199 252 794	1	1,300
32	25	10	1	700	199 252 795	1	1,400
40	32	10	1 1/4	1000	199 252 796	1	2,500
50	40	10	1 1/2	1600	199 252 797	1	2,800
63	50	10	2	3100	199 252 798	1	3,700



d	Actuator	B3	B5	da2	DE1	E	G	G1	H	H2	H4	L	Lz	M
(mm)		(mm)	(mm)	(mm)	(mm)	(mm)	(mm)	(mm)	(mm)	(mm)	(mm)	(mm)	(mm)	(mm)
20	PPA08	25	16,2	33	50	74	M6	M5	215	20	12	130	28	128
25	PPA08	25	17,5	33	58	74	M6	M5	219	20	12	143	33	128
32	PPA08	25	17,5	33	68	94	M6	M5	238	20	12	150	36	128
40	PPA15	45	23,3	33	84	94	M8	M5	244	20	15	171	43	159
50	PPA15	45	23,3	33	97	120	M8	M5	273	20	15	191	45	159
63	PPA40	45	24,3	33	124	120	M8	M5	288	20	15	220	51	184



d	R2	s1	V1	X5	X6	X7	X8	X9	X10
(mm)	(mm)	(mm)	(mm)	(mm)	(mm)	(mm)	(mm)	(mm)	(mm)
20	R150	2,3	27	80	30	43	78	132	38,00
25	R150	1,9	30	80	30	43	78	132	41,90
32	R150	3,0	36	80	30	51	78	132	47,00
40	R150	3,7	44	80	30	51	78	132	53,50
50	R150	4,6	51	80	30	62	78	132	62,75
63	R150	5,8	64	80	30	62	78	132	77,00

The technical data are not binding. They neither constitute expressly warranted characteristics nor guaranteed properties nor a guaranteed durability. They are subject to modification. Our General Terms of Sale apply.

Georg Fischer Piping Systems Ltd, Postfach, CH-8201 Schaffhausen/Switzerland Phone +41 -(0)52-631 1111e-mail: info.ps@georgfischer.com Internet: http://www.gfps.com