



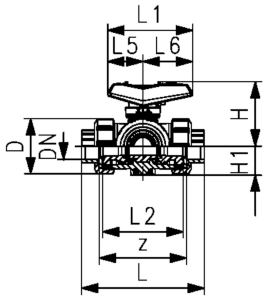
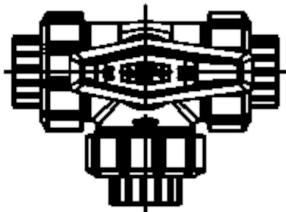
SYGEF 洁净型
PVDF无硅 手动三通球阀 543Pro
 水平型/T型孔
 带焊接承插端 公制 (美版)

型号:

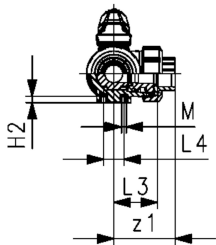
- 材质: PVDF /无油处理
- 标配带可锁手柄 (DN10-DN50)
- 安装简单, 易拆卸(阀端和阀门螺帽与546型兼容)
- PTFE球密封
- 操作角度360°, 无回转限位装置
- 附带90°回转限位装置, 在不同位置可作为夹环使用
- 内置不锈钢固定螺孔
- 初始位A-B-C开, 见流程图
- Z尺寸、阀端和活接螺母与543型球阀 (第1代) 兼容

选项:

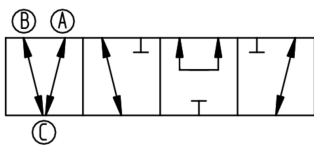
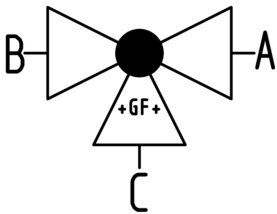
- 连接件模块带阀位反馈传感器、带LED指示灯 (DN10-DN50)
- 可配弹簧复位手柄(DN10-25)
- 可配GF气动或电动执行器
- 可提供其他阀门配置



d (mm)	DN (mm)	Size (inch)	PN (bar)	kv-value ($\Delta p=1$ bar) (l/min)	FKM code	SP weight (kg)
16	10		10	140	175 543 511	1 0,311
20	15		10	200	175 543 512	1 0,319
25	20		10	470	175 543 513	1 0,458
32	25		10	793	175 543 514	1 0,695
40	32		10	1290	175 543 515	1 1,185
50	40		10	1910	175 543 516	1 1,751
63	50	2	10	3100	175 543 517	1 3,405



d (mm)	D (mm)	H (mm)	H1 (mm)	H2 (mm)	L (mm)	L1 (mm)	L2 (mm)	L3 (mm)	L4 (mm)	L5 (mm)	L6 (mm)	M (mm)	z (mm)	z1 (mm)	近似英寸 (inch)
16	50	61	28	8	110	82	72	36	25	35	47	6	82	41	$\frac{3}{8}$
20	50	61	28	8	112	82	72	36	25	35	47	6	82	41	$\frac{1}{2}$
25	58	74	32	8	129	106	85	43	25	44	62	6	97	49	$\frac{3}{4}$
32	68	80	36	8	146	106	98	49	25	44	62	6	110	55	1
40	84	95	45	9	170	131	118	59	45	57	74	8	132	66	$1 \frac{1}{4}$
50	97	102	51	9	193	131	135	68	45	57	74	8	151	76	$1 \frac{1}{2}$
63	124	117	65	9	244	152	176	88	45	66	86	8	188	94	2



The technical data are not binding. They neither constitute expressly warranted characteristics nor guaranteed properties nor a guaranteed durability. They are subject to modification. Our General Terms of Sale apply.

Data sheet

valid from: 2026/3/28



Georg Fischer Piping Systems Ltd, Postfach, CH-8201 Schaffhausen/Switzerland Phone +41 -(0)52-631 1111 e-mail:
info.ps@georgfischer.com Internet: <http://www.gfps.com>