



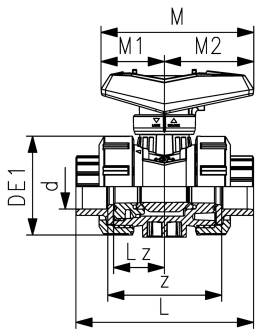
Ball valve type 546 Pro PVC-U
With solvent cement sockets metric

Model:

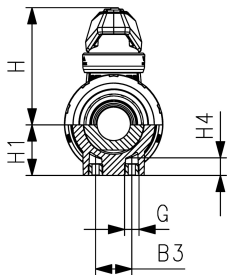
- Lockable lever as standard
- Ball seals PTFE
- Integrated stainless steel mounting inserts
- z-dimension, valve end and union nut are compatible with type 546 (1st Generation)

Option:

- Interface module for position feedback sensor with LED (PNP, NPN and NAMUR)
- Manual spring return lever "Dead man" (DN10-25)
- Pneumatic or electric actuators from GF
- Individual configuration of valves possible



d (mm)	DN (mm)	Size (inch)	PN (bar)	kv-value ($\Delta p=1$ bar) (l/min)	EPDM Code	SP	Weight (kg)	FKM Code	SP	Weight (kg)
16	10	3/8	16	70	161 546 061	1	0.153	161 546 071	1	0.156
20	15	1/2	16	185	161 546 062	1	0.156	161 546 072	1	0.158
25	20	3/4	16	350	161 546 063	1	0.240	161 546 073	1	0.242
32	25	1	16	700	161 546 064	1	0.343	161 546 074	1	0.345
40	32	1 1/4	16	1000	161 546 065	1	0.610	161 546 075	1	0.615
50	40	1 1/2	16	1600	161 546 066	1	0.838	161 546 076	1	0.844
63	50	2	16	3100	161 546 067	1	1.537	161 546 077	1	1.552
75	65	2 1/2	16	5000	161 546 068	1	4.343	161 546 078	1	3.563
90	80	3	16	7000	161 546 069	1	6.184	161 546 079	1	5.376
110	100	4	16	11000	161 546 070	1	8.642	161 546 080	1	11.600



d (mm)	B3 (mm)	DE1 (mm)	G (mm)	H (mm)	H1 (mm)	H4 (mm)	L (mm)	Lz (mm)	M (mm)	M1 (mm)	M2 (mm)	z (mm)
16	25	50	M6	60.5	27	12	92	28	82	35	47	64
20	25	50	M6	60.5	27	12	95	28	82	35	47	64
25	25	58	M6	74.0	30	12	110	33	106	44	62	72
32	25	68	M6	80.0	36	12	123	36	106	44	62	79
40	45	84	M8	95.0	44	15	146	43	131	57	74	94
50	45	97	M8	101.5	51	15	157	45	131	57	74	95
63	45	124	M8	116.5	64	15	183	51	152	66	86	107
75	70	166	M8	169.0	85	15	233	68	270	64	205	144
90	70	200	M8	180.0	105	15	254	71	270	64	205	151
110	120	238	M12	194.0	123	22	301	82	326	71	205	174

The technical data are not binding. They neither constitute expressly warranted characteristics nor guaranteed properties nor a guaranteed durability. They are subject to modification. Our General Terms of Sale apply.

Georg Fischer Piping Systems Ltd, Postfach, CH-8201 Schaffhausen/Switzerland Phone +41 -(0)52-631 1111 e-mail: info.ps@georgfischer.com Internet: <http://www.gfps.com>