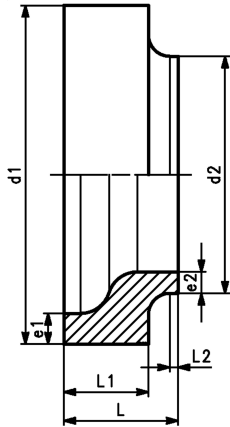




## PROGEF Standard Flush style reducer SDR17.6/PN6

### Model:

- Material: PP-H
- Flush style design
- Conventional butt-welding according to DVS 2207
- Clamping on welding machine needs to be done always on the bigger diameter (d1)
- The butt fusion machine must be suitable to weld both dimensions (d1 and d2)



d1 (mm)	d2 (mm)	PN (bar)	Code	Weight (kg)	L (mm)	L1 (mm)	L2 (mm)	e1 (mm)	e2 (mm)
355	225	6	<b>727 909 859</b>	3.736	120	85	10	21.1	13.4
355	250	6	<b>727 909 860</b>	3.160	115	80	10	20.1	14.2
355	280	6	<b>727 909 861</b>	2.946	115	80	10	20.1	15.9
355	315	6	<b>727 909 862</b>	2.587	115	80	15	20.1	17.9
400	225	6	<b>727 909 866</b>	6.000	135	100	10	23.7	13.4
400	250	6	<b>727 909 867</b>	5.732	135	100	10	23.7	14.8
400	280	6	<b>727 909 868</b>	5.388	135	100	10	23.7	16.6
400	315	6	<b>727 909 869</b>	4.880	135	100	10	22.7	17.9
400	355	6	<b>727 909 870</b>	4.395	135	100	13	22.7	20.1
450	225	6	<b>727 909 872</b>	8.881	150	110	10	26.7	13.4
450	250	6	<b>727 909 873</b>	8.577	150	110	10	26.7	14.8
450	280	6	<b>727 909 874</b>	7.684	150	100	15	25.5	15.9
450	315	6	<b>727 909 875</b>	7.005	150	100	15	25.5	17.9
450	355	6	<b>727 909 876</b>	6.405	150	100	15	25.5	20.1
450	400	6	<b>727 909 877</b>	5.942	150	100	15	25.5	22.7
500	225	6	<b>727 909 879</b>	11.545	165	115	10	29.7	13.4
500	250	6	<b>727 909 880</b>	11.273	165	115	10	29.7	14.8
500	280	6	<b>727 909 881</b>	10.916	165	115	10	29.7	16.6
500	315	6	<b>727 909 882</b>	10.003	165	115	10	28.4	17.9
500	355	6	<b>727 909 883</b>	9.672	165	115	10	28.4	20.1
500	400	6	<b>727 909 884</b>	8.231	165	115	10	28.4	22.7
500	450	6	<b>727 909 885</b>	7.599	165	115	25	28.4	25.5

The technical data are not binding. They neither constitute expressly warranted characteristics nor guaranteed properties nor a guaranteed durability. They are subject to modification. Our General Terms of Sale apply.

Georg Fischer Piping Systems Ltd, Postfach, CH-8201 Schaffhausen/Switzerland Phone +41 -(0)52-631 1111 e-mail:  
info.ps@georgfischer.com Internet: <http://www.gfps.com>