

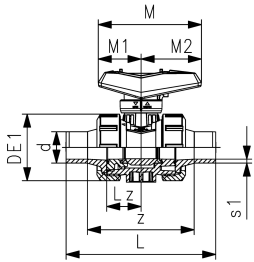
PVC-U Ball Valve type 546 Pro
With solvent cement spigots PVC-U ISO

Model:

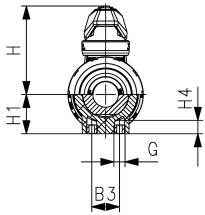
- Lockable lever as standard
- Ball seat PTFE
- Integrated stainless steel mounting inserts
- Z-dimension, valve end and union nut **are compatible** with type 546 (1st Generation)

Option:

- Interface module for position feedback sensor with LED (PNP, NPN and NAMUR)
- Manual spring return lever ("Dead man") (DN10-25)
- Pneumatic or electric actuators from GF
- Individual configuration of the valve possible



d	DN	Size	PN	kv-value	EPDM	SP	Weight	FKM	SP	Weight
(mm)	(mm)	(inch)	(bar)	($\Delta p=1$ bar)	Code		(kg)	Code		(kg)
16	10	3/8	16	71	161 546 721	1	0.157	161 546 731	1	0.157
20	15	1/2	16	185	161 546 722	1	0.157	161 546 732	1	0.157
25	20	3/4	16	350	161 546 723	1	0.242	161 546 733	1	0.242
32	25	1	16	700	161 546 724	1	0.359	161 546 734	1	0.347
40	32	1 1/4	16	1000	161 546 725	1	0.620	161 546 735	1	0.620
50	40	1 1/2	16	1600	161 546 726	1	0.869	161 546 736	1	0.845
63	50	2	16	3100	161 546 727	1	1.550	161 546 737	1	1.550
75	65	2 1/2	16	5000	161 546 728	1	3.689	161 546 738	1	5.100
90	80	3	16	7000	161 546 729	1	5.512	161 546 739	1	7.500
110	100	4	16	11000	161 546 730	1	11.900	161 546 740	1	11.900



d	B3	DE1	G	H	H1	H4	L	Lz	M	M1	M2	s1	z
(mm)	(mm)	(mm)	(mm)	(mm)	(mm)	(mm)	(mm)	(mm)	(mm)	(mm)	(mm)	(mm)	(mm)
16	25	50	M6	60.5	27	12	114	28	82	35	47	3.0	88
20	25	50	M6	60.5	27	12	124	28	82	35	47	3.0	96
25	25	58	M6	74.0	30	12	144	33	106	44	62	3.0	112
32	25	68	M6	80.0	36	12	154	36	106	44	62	4.0	118
40	45	84	M8	95.0	44	15	174	43	131	57	74	4.5	134
50	45	97	M8	101.5	51	15	194	45	131	57	74	5.5	148
63	45	124	M8	116.5	64	15	224	51	152	66	86	7.0	170
75	70	166	M8	169.0	85	15	284	68	270	64	205	8.5	194
90	70	200	M8	180.0	105	15	300	71	270	64	205	10.0	196
110	120	238	M12	194.0	123	22	340	82	326	71	205	12.0	212

The technical data are not binding. They neither constitute expressly warranted characteristics nor guaranteed properties nor a guaranteed durability. They are subject to modification. Our General Terms of Sale apply.

Georg Fischer Piping Systems Ltd, Postfach, CH-8201 Schaffhausen/Switzerland Phone +41 -(0)52-631 1111 e-mail: info.ps@georgfischer.com Internet: <http://www.gfps.com>