

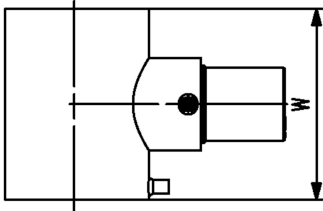
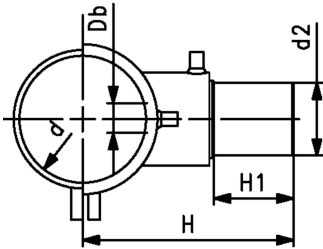


**ELGEF Plus Spigot saddle PE100**  
**d63-400mm / SDR11 / With integrated cutter**

- 10 bar Gas / 16 bar Water
- Complete with lower part
- 4 mm pin connectors
- Limited path fusion indicators
- d355-400mm. Not suitable for pipes if wall thickness is larger than SDR17 pipes.

**Note:**

\*d355 and d400 are newly delivered with underpart

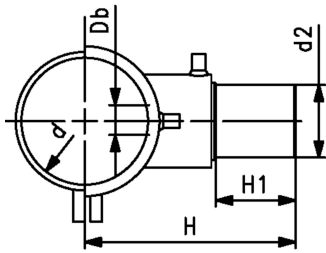


| d    | d2   | DN   | PN    | Code               | Weight |
|------|------|------|-------|--------------------|--------|
| (mm) | (mm) | (mm) | (bar) |                    | (kg)   |
| 63   | 32   | 50   | 16    | <b>193 131 234</b> | 0.469  |
| 63   | 63   | 50   | 16    | <b>193 131 237</b> | 1.036  |
| 75   | 32   | 65   | 16    | <b>193 131 244</b> | 0.618  |
| 75   | 63   | 65   | 16    | <b>193 131 247</b> | 1.166  |
| 90   | 32   | 80   | 16    | <b>193 131 254</b> | 0.543  |
| 90   | 63   | 80   | 16    | <b>193 131 257</b> | 1.128  |
| 110  | 32   | 100  | 16    | <b>193 131 264</b> | 0.607  |
| 110  | 63   | 100  | 16    | <b>193 131 267</b> | 1.195  |
| 125  | 32   | 100  | 16    | <b>193 131 274</b> | 0.659  |
| 125  | 63   | 100  | 16    | <b>193 131 277</b> | 1.224  |
| 140  | 32   | 125  | 16    | <b>193 131 284</b> | 0.679  |
| 140  | 63   | 125  | 16    | <b>193 131 287</b> | 1.224  |
| 160  | 32   | 150  | 16    | <b>193 131 294</b> | 0.652  |
| 160  | 63   | 150  | 16    | <b>193 131 297</b> | 0.850  |
| 180  | 32   | 150  | 16    | <b>193 131 304</b> | 0.777  |
| 180  | 63   | 150  | 16    | <b>193 131 307</b> | 1.316  |
| 200  | 32   | 200  | 16    | <b>193 131 314</b> | 0.854  |
| 200  | 63   | 200  | 16    | <b>193 131 317</b> | 1.352  |
| 225  | 32   | 200  | 16    | <b>193 131 324</b> | 0.856  |
| 225  | 63   | 200  | 16    | <b>193 131 327</b> | 1.324  |
| 250  | 32   | 250  | 16    | <b>193 131 334</b> | 0.787  |
| 250  | 63   | 250  | 16    | <b>193 131 337</b> | 1.348  |
| 315  | 63   | 300  | 16    | <b>193 131 358</b> | 1.094  |
| *    | 355  | 63   | 350   | <b>193 131 367</b> | 1.094  |
| *    | 400  | 63   | 400   | <b>193 131 378</b> | 0.830  |
| 280  | 63   | 250  | 16    | <b>193 131 348</b> | 0.830  |

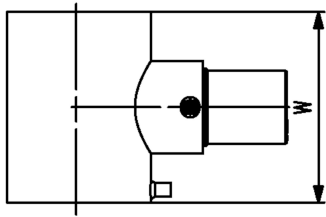
| d    | d2   | Db   | W    | H    | H1   | SLW  | Suitable for     |
|------|------|------|------|------|------|------|------------------|
| (mm) | (mm) | (mm) | (mm) | (mm) | (mm) | (mm) |                  |
| 63   | 32   | 19   | 164  | 145  | 50   | 13   | SDR Pipe 9-11    |
| 63   | 63   | 32   | 164  | 152  | 50   | 17   | SDR Pipe 9-11    |
| 75   | 32   | 19   | 164  | 151  | 50   | 13   | SDR Pipe 9-11    |
| 75   | 63   | 32   | 164  | 158  | 50   | 17   | SDR Pipe 9-11    |
| 90   | 32   | 19   | 164  | 158  | 50   | 13   | SDR Pipe 9-11    |
| 90   | 63   | 32   | 164  | 165  | 50   | 17   | SDR Pipe 9-11    |
| 110  | 32   | 19   | 164  | 168  | 50   | 13   | SDR Pipe 9-17.6  |
| 110  | 63   | 32   | 164  | 175  | 50   | 17   | SDR Pipe 9-17.6  |
| 125  | 32   | 19   | 164  | 176  | 50   | 13   | SDR Pipe 11-17.6 |
| 125  | 63   | 32   | 164  | 183  | 50   | 17   | SDR Pipe 9-17.6  |
| 140  | 32   | 19   | 164  | 183  | 50   | 13   | SDR Pipe 11-17.6 |
| 140  | 63   | 32   | 164  | 190  | 50   | 17   | SDR Pipe 9-17.6  |
| 160  | 32   | 19   | 164  | 193  | 50   | 13   | SDR Pipe 11-17.6 |
| 160  | 63   | 32   | 164  | 200  | 50   | 17   | SDR Pipe 9-17.6  |
| 180  | 32   | 19   | 164  | 203  | 50   | 13   | SDR Pipe 17-26   |
| 180  | 63   | 32   | 164  | 210  | 50   | 17   | SDR Pipe 9-26    |
| 200  | 32   | 19   | 164  | 213  | 50   | 13   | SDR Pipe 17-26   |
| 200  | 63   | 32   | 164  | 220  | 50   | 17   | SDR Pipe 11-26   |
| 225  | 32   | 19   | 164  | 226  | 50   | 13   | SDR Pipe 17-26   |

# Data sheet

valid from: 3/28/26



|   | d<br>(mm) | d2<br>(mm) | Db<br>(mm) | W<br>(mm) | H<br>(mm) | H1<br>(mm) | SLW<br>(mm) | Suitable for   |
|---|-----------|------------|------------|-----------|-----------|------------|-------------|----------------|
|   | 225       | 63         | 32         | 164       | 233       | 50         | 17          | SDR Pipe 21-26 |
|   | 250       | 32         | 19         | 164       | 238       | 50         | 13          | SDR Pipe 11-26 |
|   | 250       | 63         | 32         | 164       | 245       | 50         | 17          | SDR Pipe 17-26 |
|   | 315       | 63         | 35         | 164       | 298       | 50         | 17          | SDR Pipe 17-33 |
| * | 355       | 63         | 35         | 165       | 298       | 50         | 17          | SDR Pipe 21-33 |
| * | 400       | 63         | 35         | 165       | 320       | 50         | 17          | SDR Pipe 21-33 |
|   | 280       | 63         | 35         | 164       | 260       | 50         | 17          | SDR Pipe 17-26 |



The technical data are not binding. They neither constitute expressly warranted characteristics nor guaranteed properties nor a guaranteed durability. They are subject to modification. Our General Terms of Sale apply.

Georg Fischer Piping Systems Ltd, Postfach, CH-8201 Schaffhausen/Switzerland Phone +41 -(0)52-631 1111 e-mail:  
info.ps@georgfischer.com Internet: <http://www.gfps.com>