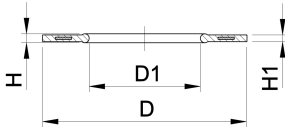




Design d710 - d1000



Profile Flange Gasket EPDM/FKM metric

Model:

- For all metric GF Flange Adaptors
- Hardness: 70° Shore EPDM, 75° Shore FKM
- EPDM: approved acc. to DVGW Water W 270, KTW recommendation
- Centering on the inner diameter of the screw crown
- material steel insert: carbon steel
- Rubber-steel body combined with rubber profile cord ring up to d630
- Rubber-steel body ideal for big dimensions (d710 - d1000)

di FA are the suitable inner diameters of flanges adaptors

d (mm)	DN (mm)	PN (bar)	EPDM Code	FKM Code	Weight (kg)	D (mm)	D1 (mm)	Suitable for	H (mm)	H1 (mm)
16	10	16	748 440 705	749 440 705	0.012	46	16	6 - 16	4	3
110	100	16	748 440 714	749 440 714	0.127	162	104	94 - 104	6	5
125	100	16	748 440 715	749 440 715	0.105	162	123	113 - 123	6	5
140	125	16	748 440 716	749 440 716	0.173	192	137	127 - 137	6	5
160	150	16	748 440 717	749 440 717	0.207	218	160	150 - 160	8	6
200	200	16	748 440 719	749 440 719	0.263	273	203	192 - 203	8	6
225	200	16	748 440 720	749 440 720	0.255	273	220	207 - 220	8	6
250	250	16	748 440 721	749 440 721	0.462	328	252	238 - 252	8	6
280	250	16	748 440 722	749 440 722	0.323	328	274	264 - 274	8	6
315	300	16	748 440 723	749 440 723	0.549	378	306	296 - 306	8	6
355	350	16	748 440 724	749 440 724	0.870	438	355	340 - 355	10	7
400	400	16	748 440 725	749 440 725	1.088	489	400	385 - 400	10	7
450	500	10	748 440 726	749 440 726	0.718	594	403	393 - 403	10	7
500	500	10	748 440 727	749 440 727	0.718	594	447	437 - 447	10	7
560	600	10	748 440 728	749 440 728	0.923	695	494	484 - 494	10	7
630	600	10	748 440 729	749 440 729	0.923	695	555	545 - 555	10	7
710	700	6	748 440 730		0.890	810	712	562 - 712	6	3
800	800	6	748 440 731		1.340	917	813	663 - 813	6	3
900	900	6	748 440 732		1.170	1017	915	765 - 915	6	3
1000	1000	6	748 440 733		1.360	1124	1016	866 - 1016	6	3

The technical data are not binding. They neither constitute expressly warranted characteristics nor guaranteed properties nor a guaranteed durability. They are subject to modification. Our General Terms of Sale apply.

Georg Fischer Piping Systems Ltd, Postfach, CH-8201 Schaffhausen/Switzerland Phone +41 -(0)52-631 1111 e-mail: info.ps@georgfischer.com Internet: <http://www.gfps.com>