



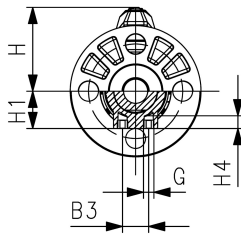
PVC-C Ball Valve type 546 Pro
With backing flanges PP-St ANSI with PVC-C

Model:

- Lockable lever as standard
- Integrated stainless steel mounting inserts
- z-dimension, valve end and union nut are compatible with type 546 (1st Generation)

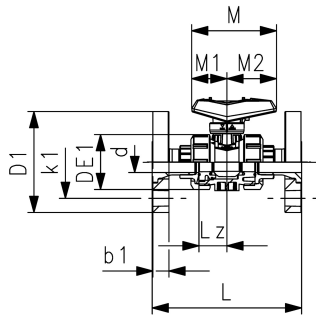
Option:

- Interface module for position feedback sensor with LED (PNP, NPN and NAMUR)
- Manual spring return lever "Dead man" (DN10-25)
- Pneumatic or electric actuators from GF
- Individual configuration of valves possible



d (mm)	DN (mm)	Size (inch)	PN (bar)	kv-value ($\Delta p=1$ bar) (L/min)	EPDM Code	SP Weight (kg)	FKM Code	SP Weight (kg)
75	65	2 ½	16	5000	163 546 168	1	6.000	163 546 178
90	80	3	16	7000	163 546 169	1	9.100	163 546 179
110	100	4	16	11000	163 546 170	1	14.200	163 546 180

b1 (mm)	B3 (mm)	DE1 (mm)	D1 (mm)	G (inch)	H (mm)	H1 (mm)	H4 (mm)	k1 (mm)	L (mm)	Lz (mm)	M (mm)	M1 (mm)	M2 (mm)	z (mm)
18	70	166	166	M8	169	85	15	140	290	68	270	64	205	180
20	70	200	200	M8	180	105	15	200	310	71	270	64	205	215
20	120	238	238	M12	194	123	22	238	350	82	326	71	255	167



The technical data are not binding. They neither constitute expressly warranted characteristics nor guaranteed properties nor a guaranteed durability. They are subject to modification. Our General Terms of Sale apply.

Georg Fischer Piping Systems Ltd, Postfach, CH-8201 Schaffhausen/Switzerland Phone +41 -(0)52-631 1111 e-mail:
 info.ps@georgfischer.com Internet: <http://www.gfps.com>