

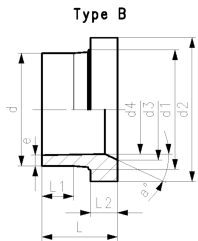
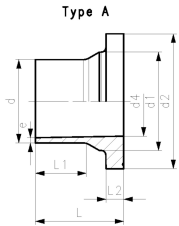


**PROGEF Plus Flange adaptor PP-H ANSI
SDR11/PN10 Combined jointing face: flat and serrated**

Model:

- Material: PP-H
- Conventional butt-welding according to DVS 2207
- IR- Infrared welding compatible
- Suitable for flange connections to metric
- Injection moulded

Flange adapters are designed to work with most butterfly valves
For bigger dimensions, see flange adaptors in other chapters



d (mm)	DN (mm)	SDR	PN (bar)	FM	Type	Code	Weight (kg)
25	20	11	10	IR	A	727 798 750	0.022
32	25	11	10	IR	A	727 798 751	0.039
40	32	11	10	IR	A	727 798 752	0.056
50	40	11	10	IR	A	727 798 753	0.087
90	80	11	10	IR	B	727 798 754	0.310

d (mm)	d1 (mm)	d2 (mm)	d3 (mm)	d4 (mm)	L (mm)	L1 (mm)	L2 (mm)	e (mm)	a°
25	32	54		20	52	27	9	2.3	
32	40	63		26	54	28	10	2.9	
40	49	73		32	56	25	11	3.7	
50	60	82		40	62	32	12	4.6	
90	105	133	78	73	80	41	17	8.2	30

The technical data are not binding. They neither constitute expressly warranted characteristics nor guaranteed properties nor a guaranteed durability. They are subject to modification. Our General Terms of Sale apply.

Georg Fischer Piping Systems Ltd, Postfach, CH-8201 Schaffhausen/Switzerland Phone +41 -(0)52-631 1111 e-mail:
info.ps@georgfischer.com Internet: <http://www.gfps.com>