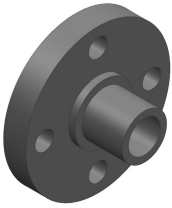
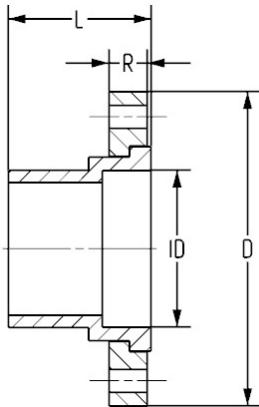


单片可旋转法兰 (插端)



- ANSI 150 Class according to ANSI B16.5
- 1/2" - 12" rating pressure 150 psi @ 73°F (10.3 bar @ 22.7°C)
- 14" - 24" pressure rating is 100 psi @ 73°F (6.9 bar @ 22.7°C) - Steel Ring
- HC = Honeycomb (Front)



Size P/L code

Size (inch)	P/L	code
1/2	25	9856-005
3/4	25	9856-007
1	25	9856-010
1 1/4	25	9856-012
1 1/2	25	9856-015
2	25	9856-020
2 1/2	25	9856-025
3	25	9856-030
4	25	9856-040
6	25	9856-060
8	25	9856-080
10	02	9856-100
12	02	9856-120
14	A34	9856-140N
16	A34	9856-160N
18	A34	9856-180N
20		9856-200N
24	A34	9856-240N

Size (inch)	Pack Qty	# holes	Bolt Dia. (inch)	bolt cir. dia. (inch)	D (inch)	长 (inch)	R (inch)	ID (inch)	Design
1/2	5	4	1/2	2,38	3,53	1,72	0,57	0,84	HC
3/4	5	4	1/2	2,75	3,87	1,85	0,59	1,05	HC
1	5	4	1/2	3,13	4,25	2,10	0,66	1,32	HC
1 1/4	5	4	1/2	3,50	4,62	2,28	0,69	1,66	HC
1 1/2	5	4	1/2	3,88	5,01	2,48	0,75	1,90	HC
2	5	4	5/8	4,75	6,02	2,80	0,82	2,38	HC
2 1/2	5	4	5/8	5,50	7,01	3,27	0,98	2,86	HC
3	5	4	5/8	6,00	7,50	3,60	1,02	3,49	HC
4	5	8	5/8	7,50	8,99	4,10	1,10	4,49	HC
6	2	8	3/4	9,50	10,98	5,10	1,25	6,60	HC
8	1	8	3/4	11,75	13,51	6,88	1,71	8,62	HC
10	1	12	7/8	14,25	15,97	8,30	1,73	10,70	HC
12	1	12	7/8	17,00	18,95	9,55	1,72	12,69	HC
14	1	12	1	18,75	21,00	13,00	0,50	11,41	FAB
16	1	16	1	21,25	23,50	14,00	0,50	13,08	FAB
18	1	16	1 1/8	22,75	25,00	16,00	0,50	14,76	FAB
20	1	20	1 1/8	25,00	27,50	18,00	0,50	16,43	
24	1	20	1 1/4	29,50	32,00	20,00	0,50	19,79	FAB

The technical data are not binding. They neither constitute expressly warranted characteristics nor guaranteed properties nor a guaranteed durability. They are subject to modification. Our General Terms of Sale apply.

Georg Fischer Piping Systems Ltd, Postfach, CH-8201 Schaffhausen/Switzerland Phone +41 -(0)52-631 1111e-mail: info.ps@georgfischer.com Internet: <http://www.gfps.com>