



Wafer-style intermediate installation butterfly valve type 565 PVDF/PA-GF
With electric actuator 230V
Without manual override
Flange standard metric/ANSI/BS/JIS
Suitable for ABS, PVC-U, PVC-C, ecoFIT, COOL-FIT and PROGEF Systems

Model:

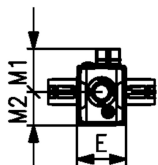
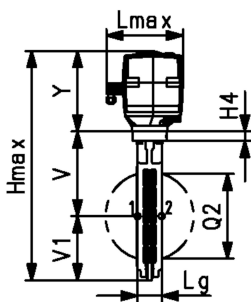
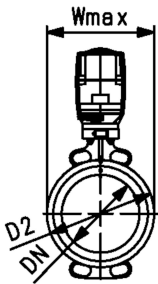
- Installation length: EN558 row 20, ISO 5752 row 20, API 609 table 2
- Flange standards: ISO 7005 PN10/16, EN 1092 PN10/16, DIN 2501 PN10/16, ANSI/ASME B 16.5 Class 150, BS 1560: 1989 Class 125/150; BS 4504 PN10/16, JIS B 2220 10K, JIS B 2239 10K
- For easy installation and removal
- Voltage 100-230V, 50-60Hz
- Factory set control range 0-90°
- Heating element, position feedback (Open/Close/ Middle)
- Manual override integrated in electric actuator
- Suitable for water and water treatment applications (e.g. sea water, drinking water and industrial water)
- Switching Ring for the double sensor for electrical position feedback is pre-assembled. Double sensor can be ordered as accessory

Option:

- Individual configuration of the valve possible
- Hand or pneumatic actuators from GF
- Double sensor for electrical position feedback incl. LED feedback
- Optional accessories: Fail-safe return unit, Monitoring board, Position controller, Profibus DP board
- Additional manual override between valve and actuator

Note:

For some material combination (e.g. DN300 valves with PE/PP pipes) special flange adapters are needed. Please check the "Perfect flange connection tool" on www.gfps.com



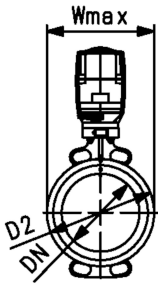
d (mm)	DN (mm)	Size (inch)	PN (bar)	kv-value ($\Delta p=1$ bar) (L/min)	Actuator	EPDM Code	SP Weight (kg)
63	50	2	10	1445	EA45	199 565 300	1 3.3
75	65	2 ½	10	2530	EA120	199 565 301	1 4.6
90	80	3	10	4020	EA120	199 565 302	1 4.7
110	100	4	10	5850	EA120	199 565 303	1 5.6
140	125	5	10	11900	EA120	199 565 304	1 6.1
160	150	6	10	18050	EA250	199 565 305	1 8.7
225	200	8	10	43667	EA250	199 565 306	1 10.0
280	250	10	6	62333	EA250	199 565 307	1 14.5
315	300	12	4	94500	EA250	199 565 308	1 18.2

d (mm)	FKM Code	SP Weight (kg)
63	199 565 320	1 3.4
75	199 565 321	1 4.7
90	199 565 322	1 4.8
110	199 565 323	1 5.8
140	199 565 324	1 6.4
160	199 565 325	1 9.0
225	199 565 326	1 10.5
280	199 565 327	1 15.2
315	199 565 328	1 19.4

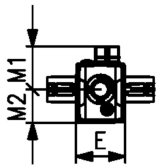
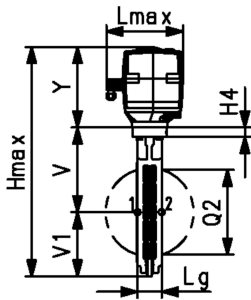
d (mm)	D2 (mm)	Wmax (mm)	Hmax (mm)	Lmax (mm)	H4 (mm)	V (mm)	V1 (mm)	Lg (mm)	E (mm)	M1 (mm)	M2 (mm)	Y (mm)	Q2 (mm)
63	100.0	122.5	377.5	190.0	23	133.5	63.0	43	122.5	107.5	83	166.5	28.5
75	121.0	132.5	411.5	190.0	23	140.0	82.0	46	122.5	107.5	83	189.5	44.0
90	138.0	137.5	424.0	190.0	23	146.0	89.0	46	122.5	107.5	83	189.5	63.5
110	158.5	158.5	459.5	190.0	23	166.5	104.0	52	122.5	107.5	83	189.5	84.0
140	187.0	187.0	487.5	190.0	23	180.0	118.0	56	122.5	107.5	83	189.5	110.5

Data sheet

valid from: 2/8/25



d (mm)	D2 (mm)	Wmax (mm)	Hmax (mm)	Lmax (mm)	H4 (mm)	V (mm)	V1 (mm)	Lg (mm)	E (mm)	M1 (mm)	M2 (mm)	Y (mm)	Q2 (mm)
160	213.0	213.0	518.5	190.0	23	189.0	130.5	56	122.5	107.5	83	199.5	137.5
225	267.0	267.0	568.0	190.0	23	209.5	159.0	60	122.5	107.5	83	199.5	190.5
280	325.5	325.5	674.5	190.0	23	262.5	195.5	68	122.5	107.5	83	216.5	239.0
315	380.0	380.0	731.0	190.0	23	284.5	230.5	78	122.5	107.5	83	216.5	285.5



The technical data are not binding. They neither constitute expressly warranted characteristics nor guaranteed properties nor a guaranteed durability. They are subject to modification. Our General Terms of Sale apply.

Georg Fischer Piping Systems Ltd, Postfach, CH-8201 Schaffhausen/Switzerland Phone +41 -(0)52-631 1111 e-mail: info.ps@georgfischer.com Internet: <http://www.gfps.com>