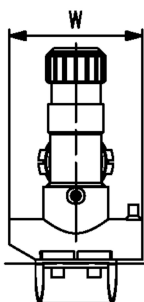
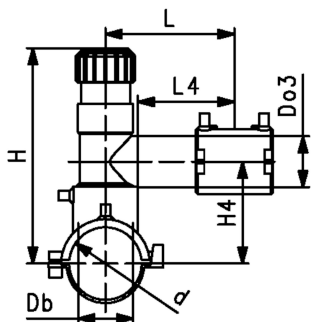




ELGEF Plus Tapping saddle (kit) PE100
d63-315mm / SDR11 / With 360° rotatable outlet

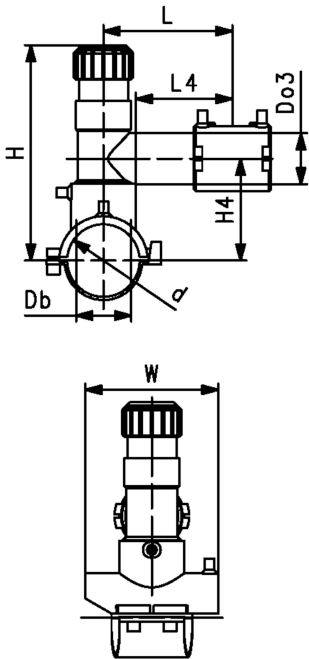
- 10 bar Gas / 16 bar Water
- With integrated cutter to tap live mains under pressure
- Complete with lower part
- 4 mm pin connectors
- Limited path fusion indicators
- Long fusion outlet
- O-ring-sealed screw cap
- Supplied as Kit with enclosed service line fitting (ELGEF Plus Coupler or Reducer)



d	Do3	DN	PN	Code	Weight	L	L4	Db	W	H	H4	Suitable for
(mm)	(mm)	(mm)	(bar)		(kg)	(mm)	(mm)	(mm)	(mm)	(mm)	(mm)	
63	20	50	16	193 132 402	0.754	130	76	32	164	186	108	SDR Pipe 9-11
63	25	50	16	193 132 403	0.761	130	76	32	164	186	108	SDR Pipe 9-11
63	32	50	16	193 132 404	0.773	130	76	32	164	186	108	SDR Pipe 9-11
63	40	50	16	193 132 405	0.798	130	76	32	164	186	108	SDR Pipe 9-11
63	50	50	16	193 132 436	1.619	160	100	32	164	234	112	SDR Pipe 9-11
63	63	50	16	193 132 437	1.623	160	100	32	164	234	112	SDR Pipe 9-11
75	20	65	16	193 132 442	0.879	130	76	32	164	191	113	SDR Pipe 9-11
75	25	65	16	193 132 443	0.900	130	76	32	164	191	113	SDR Pipe 9-11
75	32	65	16	193 132 444	0.917	130	76	32	164	191	113	SDR Pipe 9-11
75	40	65	16	193 132 445	0.958	160	76	32	164	240	118	SDR Pipe 9-11
75	50	65	16	193 132 446	1.748	160	100	32	164	240	118	SDR Pipe 9-11
75	63	65	16	193 132 447	1.753	160	100	32	164	240	118	SDR Pipe 9-11
90	20	80	16	193 132 452	0.856	130	76	32	164	199	121	SDR Pipe 9-11
90	25	80	16	193 132 453	0.858	130	76	32	164	199	121	SDR Pipe 9-11
90	32	80	16	193 132 454	0.857	130	76	32	164	199	121	SDR Pipe 9-11
90	40	80	16	193 132 455	0.780	130	76	32	164	199	126	SDR Pipe 9-11
90	50	80	16	193 132 456	1.711	160	100	32	164	248	126	SDR Pipe 9-11
90	63	80	16	193 132 457	1.707	160	100	32	164	248	126	SDR Pipe 9-11
110	20	100	16	193 132 462	0.907	130	76	32	164	209	131	SDR Pipe 9-17.6
110	25	100	16	193 132 463	0.905	130	76	32	164	209	131	SDR Pipe 9-17.6
110	32	100	16	193 132 464	0.875	130	76	32	164	209	131	SDR Pipe 9-17.6
110	40	100	16	193 132 465	0.961	130	76	32	164	209	136	SDR Pipe 9-17.6
110	50	100	16	193 132 466	1.133	160	100	35	164	258	136	SDR Pipe 9-17.6
110	63	100	16	193 132 467	1.330	160	100	35	164	258	136	SDR Pipe 9-17.6
125	20	100	16	193 132 472	0.938	130	76	32	164	216	138	SDR Pipe 9-17.6
125	25	100	16	193 132 473	0.943	130	76	32	164	216	138	SDR Pipe 9-17.6
125	32	100	16	193 132 474	0.955	130	76	32	164	216	138	SDR Pipe 9-17.6
125	40	100	16	193 132 475	0.964	130	76	32	164	216	143	SDR Pipe 9-17.6
125	50	100	16	193 132 476	1.374	160	100	35	164	256	143	SDR Pipe 9-17.6
125	63	100	16	193 132 477	1.161	160	100	35	164	256	143	SDR Pipe 9-17.6
140	20	125	16	193 132 482	0.941	130	76	32	164	234	146	SDR Pipe 9-17.6
140	25	125	16	193 132 483	0.944	130	76	32	164	234	146	SDR Pipe 9-17.6
140	32	125	16	193 132 484	0.972	130	76	32	164	234	146	SDR Pipe 9-17.6
140	40	125	16	193 132 485	1.020	130	76	32	164	234	146	SDR Pipe 9-17.6
140	50	125	16	193 132 486	1.835	160	100	35	164	283	151	SDR Pipe 9-17.6
140	63	125	16	193 132 487	1.833	160	100	35	164	283	151	SDR Pipe 9-17.6
160	20	150	16	193 132 492	0.910	130	76	32	164	234	156	SDR Pipe 9-17.6
160	25	150	16	193 132 493	0.933	130	76	32	164	234	156	SDR Pipe 9-17.6
160	32	150	16	193 132 494	0.954	130	76	32	164	234	156	SDR Pipe 9-17.6
160	40	150	16	193 132 495	0.965	130	76	32	164	234	161	SDR Pipe 9-17.6
160	50	150	16	193 132 496	1.375	160	100	35	164	283	161	SDR Pipe 9-17.6
160	63	150	16	193 132 497	1.378	160	100	35	164	283	161	SDR Pipe 9-17.6
180	20	150	16	193 132 502	1.020	130	71	32	164	244	166	SDR Pipe 9-26
180	25	150	16	193 132 503	1.057	130	71	32	164	244	166	SDR Pipe 9-26
180	32	150	16	193 132 504	1.045	130	76	32	164	244	166	SDR Pipe 9-26
180	40	150	16	193 132 505	1.122	130	76	32	164	244	171	SDR Pipe 9-26
180	50	150	16	193 132 506	1.938	160	100	35	164	293	171	SDR Pipe 9-26
180	63	150	16	193 132 507	1.918	160	100	35	164	293	171	SDR Pipe 9-26

Data sheet

valid from: 3/9/26



d	Do3	DN	PN	Code	Weight	L	L4	Db	W	H	H4	Suitable for
(mm)	(mm)	(mm)	(bar)		(kg)	(mm)	(mm)	(mm)	(mm)	(mm)	(mm)	
200	20	200	16	193 132 512	1.065	130	76	32	164	254	176	SDR Pipe 9-26
200	25	200	16	193 132 513	1.065	130	71	32	164	254	176	SDR Pipe 9-26
200	32	200	16	193 132 514	1.095	130	76	32	164	254	176	SDR Pipe 9-26
200	40	200	16	193 132 515	1.131	130	76	32	164	254	181	SDR Pipe 9-26
200	50	200	16	193 132 516	1.957	160	100	35	164	303	181	SDR Pipe 9-26
200	63	200	16	193 132 517	1.900	160	100	35	164	303	181	SDR Pipe 9-26
225	20	200	16	193 132 522	1.460	130	71	32	164	266	188	SDR Pipe 11-26
225	25	200	16	193 132 523	0.991	130	71	32	164	266	188	SDR Pipe 11-26
225	40	200	16	193 132 525	1.134	130	76	32	164	266	193	SDR Pipe 11-26
225	32	200	16	193 132 524	1.095	130	76	32	164	266	188	SDR Pipe 11-26
225	50	200	16	193 132 526	1.921	160	100	35	164	315	193	SDR Pipe 11-26
225	63	200	16	193 132 527	1.951	160	100	35	164	315	193	SDR Pipe 11-26
250	20	250	16	193 132 532	1.079	130	76	32	164	279	201	SDR Pipe 11-26
250	25	250	16	193 132 533	1.095	130	76	32	164	279	201	SDR Pipe 11-26
250	32	250	16	193 132 534	1.092	130	76	32	164	279	201	SDR Pipe 11-26
250	40	250	16	193 132 535	1.113	160	76	32	164	279	206	SDR Pipe 11-26
250	50	250	16	193 132 536	1.971	160	100	35	164	328	206	SDR Pipe 11-26
250	63	250	16	193 132 537	1.923	160	100	35	164	328	206	SDR Pipe 11-26
280	32	250	16	193 132 548	1.455	160	100	35	164	343	206	SDR Pipe 11-26
280	40	250	16	193 132 549	1.500	160	100	35	164	343	206	SDR Pipe 11-26
280	50	250	16	193 132 550	1.500	160	100	35	164	343	206	SDR Pipe 11-26
280	63	250	16	193 132 551	1.510	160	100	35	164	343	206	SDR Pipe 11-26
315	32	300	16	193 132 558	1.648	160	100	35	164	381	206	SDR Pipe 11-33
315	40	300	16	193 132 559	1.015	160	100	35	164	381	206	SDR Pipe 11-33
315	50	300	16	193 132 560	1.440	160	100	35	164	381	206	SDR Pipe 11-33
315	63	300	16	193 132 561	1.602	160	100	35	164	381	206	SDR Pipe 11-33

The technical data are not binding. They neither constitute expressly warranted characteristics nor guaranteed properties nor a guaranteed durability. They are subject to modification. Our General Terms of Sale apply.

Georg Fischer Piping Systems Ltd, Postfach, CH-8201 Schaffhausen/Switzerland Phone +41 -(0)52-631 1111 e-mail: info.ps@georgfischer.com Internet: <http://www.gfps.com>