



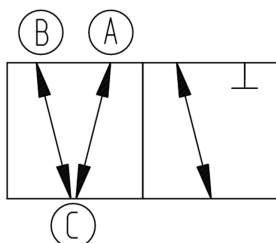
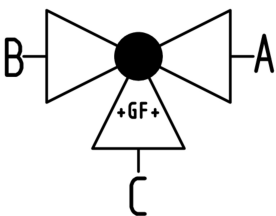
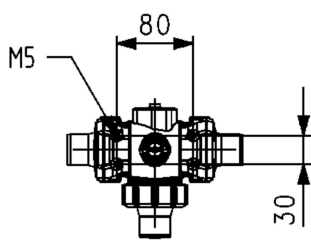
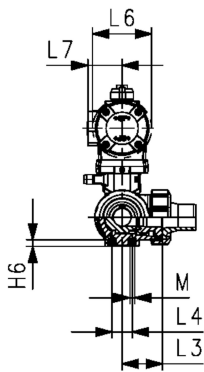
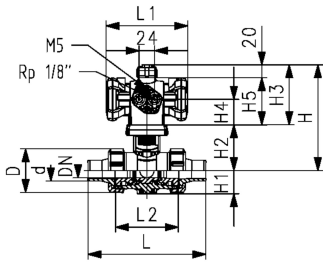
PROGEF Standard 3-Way ball valve type 543 Pro P
Horizontal/T-port
DA (Double acting)
Without manual override
With butt fusion spigots
IR-Plus SDR11 metric

Model:

- Material: PP-H
- Control pressure supply through integrated NAMUR interface according VDI/VDE 3845 with 5.6 bar (81.2 psi)
- Basic position A-B-C opened, activated position B-C opened, see flow scheme
- Control time 90° <) 1-2s
- For easy installation and removal
- Integrated stainless steel mounting inserts
- Full plastic solution (actuator housing made of PP-GF)
- Visual position indicator
- Z-dimension, valve end and union nut are compatible with types 285 – 288 and 543 (1st Generation)

Option:

- Position feedback sensor, incl. LED feedback (DN10-50) - PNP, NPN and NAMUR
- Positioner RPC, RPC D, RPC PID
- Individual configuration of the valve



d (mm)	DN (mm)	Size (inch)	PN (bar)	kv-value (Δp=1 bar) (L/min)	EPDM Code	FKM Code	SP	Weight (kg)
20	15	½	10	200	199 296 263	199 296 273	1	0.850
25	20	¾	10	470	199 296 264	199 296 274	1	0.943
32	25	1	10	793	199 296 265	199 296 275	1	1.071
40	32	1 ¼	10	1290	199 296 266	199 296 276	1	1.800
50	40	1 ½	10	1910	199 296 267	199 296 277	1	2.117
63	50	2	10	3100	199 296 268	199 296 278	1	3.049

d Actuator (mm)	D (mm)	H (mm)	H1 (mm)	H2 (mm)	H3 (mm)	H4 (mm)	H5 (mm)	H6 (mm)	L (mm)	L1 (mm)	L2 (mm)	L3 (mm)	L4 (mm)	L6 (mm)	
20	PPA08	50	157	28	62	95	41	75	8	146	128	72	36	25	74
25	PPA08	58	166	32	71	95	41	75	8	163	128	85	43	25	74
32	PPA08	68	166	36	71	95	41	75	8	178	128	98	49	25	74
40	PPA15	84	192	45	84	108	45	88	9	204	165	118	59	45	94
50	PPA15	97	192	51	84	108	45	88	9	237	165	135	68	45	94
63	PPA40	124	237	65	106	131	56	111	9	296	184	176	88	45	120

d (mm)	L7 (mm)	M (mm)	e (mm)	closest inch (inch)
20	32	6	1.9	½
25	32	6	2.3	¾
32	32	6	2.9	1
40	38	8	3.7	1 ¼
50	38	8	4.6	1 ½
63	47	8	5.8	2

Data sheet

valid from: 8/10/24



The technical data are not binding. They neither constitute expressly warranted characteristics nor guaranteed properties nor a guaranteed durability. They are subject to modification. Our General Terms of Sale apply.

Georg Fischer Piping Systems Ltd, Postfach, CH-8201 Schaffhausen/Switzerland Phone +41 -(0)52-631 1111 e-mail: info.ps@georgfischer.com Internet: <http://www.gfps.com>