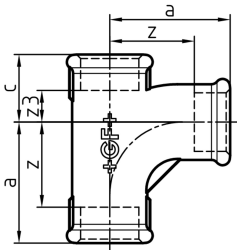


Data sheet

valid from: 7/29/25



131 Pitcher tee, equal, ISO/EN E1



	Dim. (inch)	Black Code	Galvanised Code	SP	GP	a (mm)	c (mm)	z (mm)	z3 (mm)
EN *-	½	770 131 104	770 131 204	10	50	45	24	32	11
EN *-	¾	770 131 105	770 131 205		30	50	28	35	13
EN *-	1	770 131 106	770 131 206		20	63	33	46	16
EN *-	1 ¼	770 131 107	770 131 207		10	76	40	57	21
EN *-	1 ½	770 131 108	770 131 208		8	85	43	66	24
EN *-	2	770 131 109	770 131 209		4	102	53	78	29
EN *-	2 ½	770 131 110	770 131 210		6	115	62	88	35
EN *-	3	770 131 111	770 131 211		4	127	70	97	40
EN *-	4	770 131 112	770 131 212		1	165	87	129	51

The technical data are not binding. They neither constitute expressly warranted characteristics nor guaranteed properties nor a guaranteed durability. They are subject to modification. Our General Terms of Sale apply.

Georg Fischer Piping Systems Ltd, Postfach, CH-8201 Schaffhausen/Switzerland Phone +41 -(0)52-631 1111 e-mail: info.ps@georgfischer.com Internet: <http://www.gfps.com>