



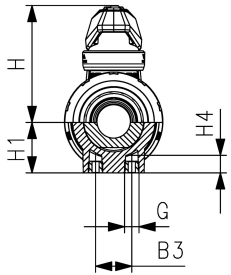
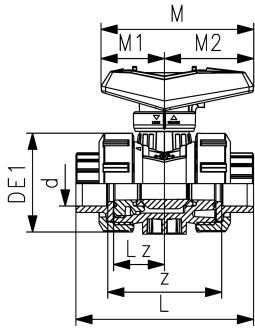
PROGEF Standard Ball Valve type 546 Pro
With fusion sockets PP-H ISO

Model:

- Lockable lever as standard
- Ball seals PTFE
- Integrated stainless steel mounting inserts
- z-dimension, valve end and union nut are compatible with type 546 (1st Generation)

Option:

- Interface module for position feedback sensor with LED (PNP, NPN and NAMUR)
- Manual spring return lever "Dead man" (DN10-25)
- Pneumatic or electric actuators from GF
- Individual configuration of valves possible



d (mm)	DN (mm)	Size (inch)	PN (bar)	kv-value ($\Delta p=1$ bar) (l/min)	EPDM Code	Weight (kg)	SP	FKM Code	SP	Weight (kg)
16	10	3/8	10	71	167 546 401	0.119	1	167 546 411	1	0.115
20	15	1/2	10	185	167 546 402	0.120	1	167 546 412	1	0.123
25	20	3/4	10	350	167 546 403	0.188	1	167 546 413	1	0.184
32	25	1	10	700	167 546 404	0.256	1	167 546 414	1	0.258
40	32	1 1/4	10	1000	167 546 405	0.444	1	167 546 415	1	0.451
50	40	1 1/2	10	1600	167 546 406	0.608	1	167 546 416	1	0.617
63	50	2	10	3100	167 546 407	1.108	1	167 546 417	1	1.130
75	65	2 1/2	10	5000	167 546 408	3.322	1	167 546 418	1	3.335
90	80	3	10	7000	167 546 409	4.701	1	167 546 419	1	5.500
110	100	4	10	11000	167 546 410	7.276	1	167 546 420	1	8.700

d (mm)	FFKM Code	SP	Weight (kg)
16	167 546 721	1	0.115
20	167 546 722	1	0.115
25	167 546 723	1	0.180
32	167 546 724	1	0.255
40	167 546 725	1	0.440
50	167 546 726	1	0.610
63	167 546 727	1	1.145
75			
90			
110			

d (mm)	B3 (mm)	DE1 (mm)	G (inch)	H (mm)	H1 (mm)	H4 (mm)	L (mm)	Lz (mm)	M (mm)	M1 (mm)	M2 (mm)	z (mm)
16	25	50	M6	60.5	27	12	93	28	82	35	47	67
20	25	50	M6	60.5	27	12	95	28	82	35	47	66
25	25	58	M6	74.0	30	12	109	33	106	44	62	77
32	25	68	M6	80.0	36	12	119	36	106	44	62	83
40	45	84	M8	95.0	44	15	135	43	131	57	74	99
50	45	97	M8	101.5	51	15	147	45	131	57	74	105
63	45	124	M8	116.5	64	15	168	51	152	66	86	117
75	70	166	M8	169.0	85	15	233	68	270	64	205	167
90	70	200	M8	180.0	105	15	254	71	270	64	205	180
110	120	238	M12	194.0	123	22	301	82	326	71	255	215

The technical data are not binding. They neither constitute expressly warranted characteristics nor guaranteed properties nor a guaranteed durability. They are subject to modification. Our General Terms of Sale apply.

Data sheet

valid from: 4/3/25



Georg Fischer Piping Systems Ltd, Postfach, CH-8201 Schaffhausen/Switzerland Phone +41 -(0)52-631 1111 e-mail:
info.ps@georgfischer.com Internet: <http://www.gfps.com>