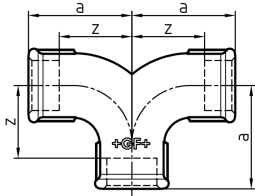




**132**  
Twin elbow, equal, ISO/EN E2



	Dim. (inch)	Black Code	Galvanised Code	SP	GP	a (mm)	z (mm)
EN *-	½	<b>770 132 104</b>	<b>770 132 204</b>	40	40	45	32
EN *-	¾	<b>770 132 105</b>	<b>770 132 205</b>	30		50	35
EN *-	1	<b>770 132 106</b>	<b>770 132 206</b>	20		63	46
EN *-	1 ¼	<b>770 132 107</b>	<b>770 132 207</b>	8		76	57
EN *-	1 ½	<b>770 132 108</b>	<b>770 132 208</b>	5		85	66
EN *-	2	<b>770 132 109</b>	<b>770 132 209</b>	5		102	78

The technical data are not binding. They neither constitute expressly warranted characteristics nor guaranteed properties nor a guaranteed durability. They are subject to modification. Our General Terms of Sale apply.

Georg Fischer Piping Systems Ltd, Postfach, CH-8201 Schaffhausen/Switzerland Phone +41 -(0)52-631 1111 e-mail: info.ps@georgfischer.com Internet: <http://www.gfps.com>