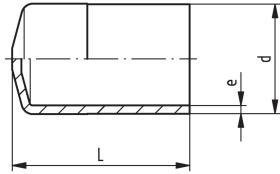


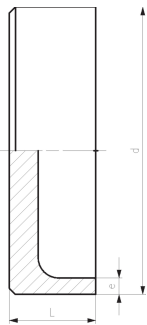
## SYGEF Standard end cap SDR21/PN16

### Model:

- Material: PVDF
- Type A: injection molded
- Type B: machined, incl. facing mark (must not be exceeded)



Type A



Type B

d	DN	PN	SDR	FM	Type	Code	L	e
(mm)	(mm)	(bar)					(mm)	(mm)
20	15	16	21	BCF, IR	A	<b>735 968 006</b>	47.0	1.9
25	20	16	21	BCF, IR	A	<b>735 968 007</b>	47.0	1.9
32	25	16	21	BCF, IR	A	<b>735 968 008</b>	52.0	2.4
40	32	16	21	BCF, IR	B	<b>735 968 309</b>	30.0	2.4
50	40	16	21	BCF, IR	B	<b>735 968 310</b>	30.0	3.0
63	50	16	21	BCF, IR	B	<b>735 968 311</b>	30.0	3.0
75	65	16	21	BCF, IR	A	<b>735 968 012</b>	64.0	3.6
90	80	16	21	BCF, IR	A	<b>735 968 013</b>	70.5	4.3
110	100	16	21	BCF, IR	A	<b>735 968 014</b>	77.5	5.3
140	125	16	21	IR	B	<b>735 968 316</b>	45.0	6.7
160	150	16	21	IR	B	<b>735 968 317</b>	46.0	7.7
200	200	16	21	IR	B	<b>735 968 319</b>	54.0	9.6
225	200	16	21	IR	B	<b>735 968 320</b>	57.0	10.8

The technical data are not binding. They neither constitute expressly warranted characteristics nor guaranteed properties nor a guaranteed durability. They are subject to modification. Our General Terms of Sale apply.

Georg Fischer Piping Systems Ltd, Postfach, CH-8201 Schaffhausen/Switzerland Phone +41 -(0)52-631 1111 e-mail:  
info.ps@georgfischer.com Internet: <http://www.gfps.com>