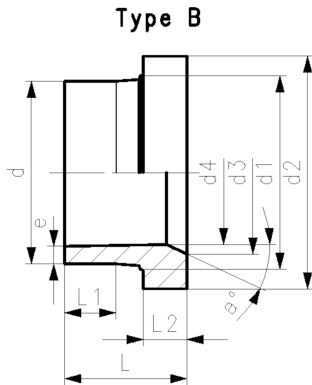


## PROGEF Standard Flange adaptor for butterfly valves SDR11/PN10

### Model:

- Material: PP-R
- Conventional butt-welding according to DVS 2207
- Suitable for butterfly valve type 567/578 and 038/039

d	DN	SDR	PN	Type	Code	Weight
(mm)	(mm)		(bar)			(kg)
355	350	11	10	B	<b>727 798 924</b>	7.300
400	400	11	10	B	<b>727 798 925</b>	10.200
450	500	11	10	B	<b>727 798 926</b>	17.900
500	500	11	10	B	<b>727 798 927</b>	20.100



d1	d2	d3	d4	L	L1	L2	e	a°
(mm)	(mm)	(mm)	(mm)	(mm)	(mm)	(mm)	(mm)	
373	430	350	284	187	70	65	33.9	25
427	482	400	320	196	70	70	38.2	25
467	533	450	360	272	105	107	43.0	23
530	585	498	400	261	105	90	47.8	25

The technical data are not binding. They neither constitute expressly warranted characteristics nor guaranteed properties nor a guaranteed durability. They are subject to modification. Our General Terms of Sale apply.

Georg Fischer Piping Systems Ltd, Postfach, CH-8201 Schaffhausen/Switzerland Phone +41 -(0)52-631 1111 e-mail: info.ps@georgfischer.com Internet: <http://www.gfps.com>