



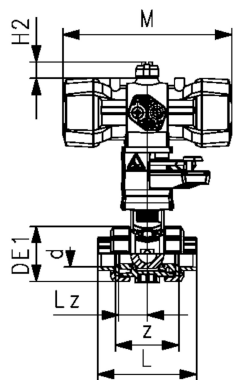
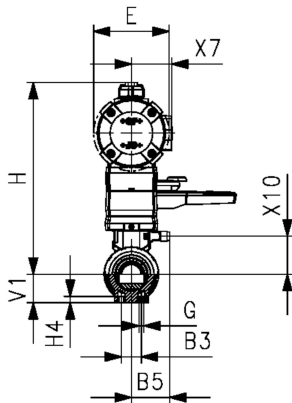
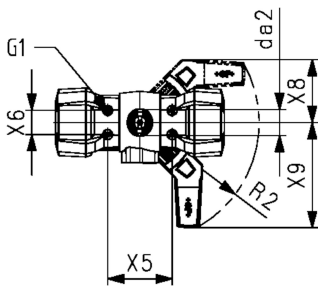
PVC-U Vented Ball valve type 546 Pro V with PPA FC (Fail Safe to Close)
With solvent cement sockets PVC-U ASTM
With manual override

Model:

- Control pressure supply through integrated NAMUR interface according VDI/VDE 3845
- Full plastic solution (actuator housing made of PP-GF)
- Visual position indicator
- Integrated stainless steel mounting inserts
- z-dimension, valve end and union nut are compatible with type 546 (1st Generation)
- 3 mm drilled hole inside the ball
- Benefits: Safely releases trapped gas or liquid; Reduces risk of rupture, leakage, and explosion; Protects valve seals and components from pressure-related wear
- Range of use: The vented ball valve is designed for applications such as: chlorinated water, water where bleach (**sodium hypochlorite solutions**) is present, and other applications where liquids requiring out-gassing exist.
- General functions: The special vent on side of the ball allows for pressure to be released back into the closed system. (Upstream) This helps prevent potentially dangerous pressure from building up inside the valve.

Option:

- Position feedback through double sensor with LED (PNP, NPN and NAMUR)
- Positioner RPC, RPC D, RPC PID
- Individual configuration of valves possible



d (mm)	DN (mm)	Size (inch)	PN (bar)	kv-value ($\Delta p=1$ bar) (L/min)	EPDM Code	SP	Weight (kg)	FKM Code	SP	Weight (kg)
16	10	3/8	10	70	199253002V	1	1.500	199253012V	1	1.500
20	15	1/2	10	185	199253003V	1	1.500	199253013V	1	1.285
25	20	3/4	10	350	199253004V	1	1.600	199253014V	1	1.600
32	25	1	10	700	199253005V	1	1.483	199253015V	1	1.700
40	32	1 1/4	10	1000	199253006V	1	2.800	199253016V	1	2.800
50	40	1 1/2	10	1600	199253007V	1	3.100	199253017V	1	3.100
63	50	2	10	3100	199253008V	1	3.386	199253018V	1	4.000

d (mm)	Actuator	B3 (mm)	B5 (mm)	da2 (mm)	DE1 (mm)	E (mm)	G (mm)	G1 (mm)	H (mm)	H2 (mm)	H4 (mm)	L (mm)	Lz (mm)	M (mm)	R2
16	PPA08	25	16.2	33	50	74	M6	M5	215	20	12	92	28	159	R150
20	PPA08	25	16.2	33	50	74	M6	M5	215	20	12	95	28	159	R150
25	PPA08	25	17.5	33	58	74	M6	M5	219	20	12	110	33	159	R150
32	PPA15	25	17.5	33	68	94	M6	M5	238	20	12	123	36	211	R150
40	PPA15	45	23.3	33	84	94	M8	M5	244	20	15	146	43	211	R150
50	PPA40	45	23.3	33	97	120	M8	M5	273	20	15	157	45	246	R150
63	PPA40	45	24.3	33	124	120	M8	M5	288	20	15	183	51	246	R150

d (mm)	V1 (mm)	X5 (mm)	X6 (mm)	X7 (mm)	X8 (mm)	X9 (mm)	X10 (mm)	z (mm)
16	27	80	30	43	78	132	38.0	64
20	27	80	30	43	78	132	38.0	64
25	30	80	30	43	78	132	41.9	72
32	36	80	30	51	78	132	47.0	79
40	44	80	30	51	78	132	53.5	94
50	51	80	30	62	78	132	62.8	95
63	64	80	30	62	78	132	77.0	107

Data sheet

valid from: 6/19/25



The technical data are not binding. They neither constitute expressly warranted characteristics nor guaranteed properties nor a guaranteed durability. They are subject to modification. Our General Terms of Sale apply.

Georg Fischer Piping Systems Ltd, Postfach, CH-8201 Schaffhausen/Switzerland Phone +41 -(0)52-631 1111 e-mail:
info.ps@georgfischer.com Internet: <http://www.gfps.com>