



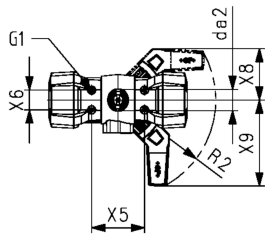
PVC-U Ball valve type 546 Pro with PPA FO (Fail Safe to Open)
With threaded sockets PVC-U ASTM NPT
With manual override

Model:

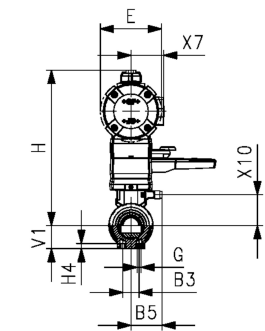
- Control pressure supply through integrated NAMUR interface according VDI/VDE 3845
- Full plastic solution (actuator housing made of PP-GF)
- Visual position indicator
- Integrated stainless steel mounting inserts
- z-dimension, valve end and union nut are compatible with type 546 (1st Generation)

Option:

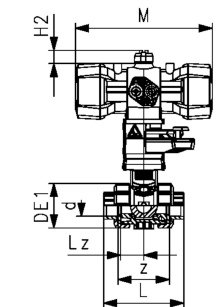
- Position feedback through double sensor with LED (PNP, NPN and NAMUR)
- Positioner RPC, RPC D, RPC PID
- Individual configuration of valves possible



d (mm)	DN (mm)	Size (inch)	PN (bar)	kv-value ($\Delta p=1$ bar) (L/min)	EPDM Code	SP Weight (kg)	FKM Code	SP Weight (kg)		
16	10	3/8	10	70	199 253 222	1	1.500	199 253 232	1	1.500
20	15	1/2	10	185	199 253 223	1	1.500	199 253 233	1	1.500
25	20	3/4	10	350	199 253 224	1	1.600	199 253 234	1	1.600
32	25	1	10	700	199 253 225	1	1.700	199 253 235	1	1.700
40	32	1 1/4	10	1000	199 253 226	1	2.800	199 253 236	1	2.800
50	40	1 1/2	10	1600	199 253 227	1	3.100	199 253 237	1	3.100
63	50	2	10	3100	199 253 228	1	4.000	199 253 238	1	4.000



d (mm)	Actuator	B3 (mm)	B5 (mm)	da2 (mm)	DE1 (mm)	E (mm)	G (mm)	G1 (mm)	H (mm)	H2 (mm)	H4 (mm)	L (mm)	Lz (mm)	M (mm)	R2
16	PPA08	25	16.2	33	50	74	M6	M5	215	20	12	95	28	159	R150
20	PPA08	25	16.2	33	50	74	M6	M5	215	20	12	100	28	159	R150
25	PPA08	25	17.5	33	58	74	M6	M5	219	20	12	114	33	159	R150
32	PPA15	25	17.5	33	68	94	M6	M5	238	20	12	127	36	211	R150
40	PPA15	45	23.3	33	84	94	M8	M5	244	20	15	146	43	211	R150
50	PPA40	45	23.3	33	97	120	M8	M5	273	20	15	152	45	246	R150
63	PPA40	45	24.3	33	124	120	M8	M5	288	20	15	177	51	246	R150



d (mm)	V1 (mm)	X5 (mm)	X6 (mm)	X7 (mm)	X8 (mm)	X9 (mm)	X10 (mm)	z (mm)	Thread Type
16	27	80	30	43	78	132	38.00	69	NPT
20	27	80	30	43	78	132	38.00	67	NPT
25	30	80	30	43	78	132	41.90	78	NPT
32	36	80	30	51	78	132	47.00	85	NPT
40	44	80	30	51	78	132	53.50	100	NPT
50	51	80	30	62	78	132	62.75	106	NPT
63	64	80	30	62	78	132	77.00	121	NPT

The technical data are not binding. They neither constitute expressly warranted characteristics nor guaranteed properties nor a guaranteed durability. They are subject to modification. Our General Terms of Sale apply.

Georg Fischer Piping Systems Ltd, Postfach, CH-8201 Schaffhausen/Switzerland Phone +41 -(0)52-631 1111 e-mail:
 info.ps@georgfischer.com Internet: <http://www.gfps.com>