



PVC-U#三通球阀#543Pro
垂直型/L型孔
带胶粘-插端 公制

型号:

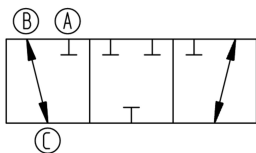
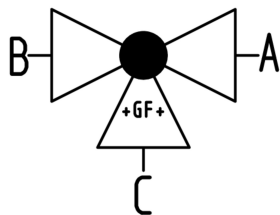
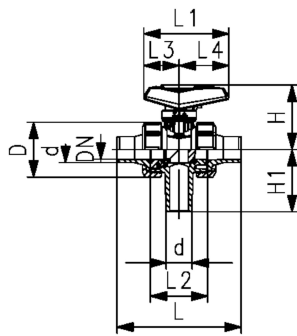
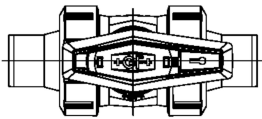
- 标配带可锁手柄 (DN10-DN50)
- 安装简单, 易拆卸
- 垂直入口公制胶粘插端
- PTFE球密封
- 操作角度360°, 无回转限位装置
- 初始位A-C开, 见流程图
- Z尺寸、阀端和活接螺母与543型球阀 (第1代) 兼容

自动模式:

- 用于两个入口相连

选项:

- 连接件模块带阀门反馈传感器、带LED指示灯 (DN10-DN50)
- 可配弹簧复位手柄(DN10-25)
- 可配GF气动或电动执行器
- 可提供其他阀门配置



d (mm)	DN (mm)	PN (bar)	kv-value (Δp=1 bar) (l/min)	EPDM code	SP	weight (kg)	FKM code	SP	weight (kg)
16	10	10	49	161 543 441	1	0,166	161 543 451	1	0,166
20	15	10	77	161 543 442	1	0,172	161 543 452	1	0,172
25	20	10	146	161 543 443	1	0,265	161 543 453	1	0,265
32	25	10	260	161 543 444	1	0,388	161 543 454	1	0,388
40	32	10	437	161 543 445	1	0,637	161 543 455	1	0,636
50	40	10	667	161 543 446	1	0,917	161 543 456	1	0,928
63	50	10	1293	161 543 447	1	1,701	161 543 457	1	1,701

d (mm)	D (mm)	H (mm)	H1 (mm)	L (mm)	L1 (mm)	L2 (mm)	L3 (mm)	L4 (mm)	L5 (mm)	L6 (mm)	近似英寸 (inch)
16	50	61	62	114	82	56	32	45	35	47	³ / ₈
20	50	61	62	124	82	56	32	45	35	47	¹ / ₂
25	58	74	72	144	106	66	39	58	44	62	³ / ₄
32	68	80	77	154	106	71	39	58	44	62	1
40	84	95	87	174	131	85	54	74	57	74	1 ¹ / ₄
50	97	102	97	194	131	89	54	74	57	74	1 ¹ / ₂
63	124	117	112	224	152	101	66	87	66	86	2

The technical data are not binding. They neither constitute expressly warranted characteristics nor guaranteed properties nor a guaranteed durability. They are subject to modification. Our General Terms of Sale apply.

Georg Fischer Piping Systems Ltd, Postfach, CH-8201 Schaffhausen/Switzerland Phone +41 -(0)52-631 1111e-mail: info.ps@georgfischer.com Internet: http://www.gfps.com