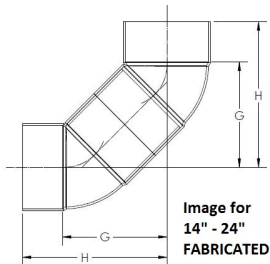
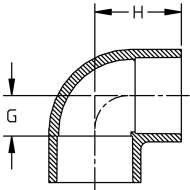
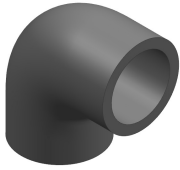


ChlorFIT 90° Elbow (SxS) Schedule 80 CORZAN® CPVC



Size (inch)	P/L	Code	Pack Qty	H (inch)	G (inch)	Design
¼	625	9806-002	50	0.96	0.35	HS
½	625	9806-005	25	1.41	0.51	SL
¾	625	9806-007	25	1.60	0.57	SL
1	625	9806-010	10	1.83	0.68	SL
1 ¼	625	9806-012	10	2.18	0.90	SL
1 ½	625	9806-015	10	2.43	1.04	SL
2	625	9806-020	20	2.80	1.27	SL
2 ½	625	9806-025	5	3.33	1.53	SL
3	625	9806-030	5	3.73	1.81	SL
4	625	9806-040	5	4.63	2.32	SL
6	625	9806-060	2	6.56	3.53	SL
8	625	9806-080	1	8.68	4.55	SL
10	B10	9806-100	1	10.79	5.77	SL
12	B10	9806-120	1	12.92	6.87	SL
14	A34	9806-140N	1	26.00	19.00	FAB
16	A34	9806-160N	1	29.00	21.00	FAB
18	A34	9806-180N	1	33.50	24.50	FAB
20	A34	9806-200N	1	35.75	25.75	FAB
24	A34	9806-240N	1	43.00	31.00	FAB

The technical data are not binding. They neither constitute expressly warranted characteristics nor guaranteed properties nor a guaranteed durability. They are subject to modification. Our General Terms of Sale apply.

Georg Fischer Piping Systems Ltd, Postfach, CH-8201 Schaffhausen/Switzerland Phone +41 -(0)52-631 1111 e-mail: info.ps@georgfischer.com Internet: <http://www.gfps.com>