



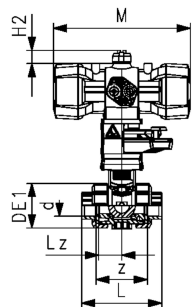
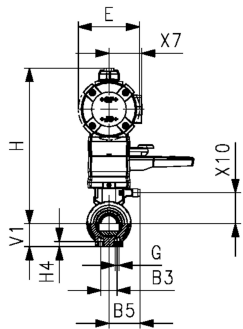
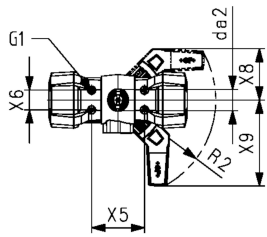
**PVC-U Ball valve type 546 Pro with PPA
FC (Fail Safe to Close)
With threaded sockets PVC-U ISO Rp
With manual override**

Model:

- Control pressure supply through integrated NAMUR interface according VDI/VDE 3845
- Full plastic solution (actuator housing made of PP-GF)
- Visual position indicator
- Integrated stainless steel mounting inserts
- z-dimension, valve end and union nut are compatible with type 546 (1st Generation)

Option:

- Position feedback through double sensor with LED (PNP, NPN and NAMUR)
- Positioner RPC, RPC D, RPC PID
- Individual configuration of valves possible



d (mm)	DN (mm)	Size (inch)	PN (bar)	kv-value ($\Delta p=1$ bar) (L/min)	EPDM Code	SP Weight (kg)	FKM Code	SP Weight (kg)
16	10	3/8	10	70	199 250 362	1	1.500	199 250 372
20	15	1/2	10	185	199 250 363	1	1.500	199 250 373
25	20	3/4	10	350	199 250 364	1	1.369	199 250 374
32	25	1	10	700	199 250 365	1	1.700	199 250 375
40	32	1 1/4	10	1000	199 250 366	1	2.800	199 250 376
50	40	1 1/2	10	1600	199 250 367	1	3.100	199 250 377
63	50	2	10	3100	199 250 368	1	4.000	199 250 378

d (mm)	Actuator	B3 (mm)	B5 (mm)	da2 (mm)	DE1 (mm)	E (mm)	G (mm)	G1 (mm)	H (mm)	H2 (mm)	H4 (mm)	L (mm)	Lz (mm)	M (mm)	R2
16	PPA08	25	16.2	33	50	74	M6	M5	215	20	12	95	28	159	R150
20	PPA08	25	16.2	33	50	74	M6	M5	215	20	12	100	28	159	R150
25	PPA08	25	17.5	33	58	74	M6	M5	219	20	12	114	33	159	R150
32	PPA15	25	17.5	33	68	94	M8	M5	238	20	12	127	36	211	R150
40	PPA15	45	23.3	33	84	94	M8	M5	244	20	15	146	43	211	R150
50	PPA40	45	23.3	33	97	120	M8	M5	273	20	15	152	45	246	R150
63	PPA40	45	24.3	33	124	120	M8	M5	288	20	15	177	51	246	R150

d (mm)	V1 (mm)	X5 (mm)	X6 (mm)	X7 (mm)	X8 (mm)	X9 (mm)	X10 (mm)	z (mm)	Thread Type
16	27	80	30	43	78	132	38.00	69	Rp
20	27	80	30	43	78	132	38.00	67	Rp
25	30	80	30	43	78	132	41.90	78	Rp
32	36	80	30	51	78	132	47.00	85	Rp
40	44	80	30	51	78	132	53.50	100	Rp
50	51	80	30	62	78	132	62.75	106	Rp
63	64	80	30	62	78	132	77.00	121	Rp

The technical data are not binding. They neither constitute expressly warranted characteristics nor guaranteed properties nor a guaranteed durability. They are subject to modification. Our General Terms of Sale apply.

Georg Fischer Piping Systems Ltd, Postfach, CH-8201 Schaffhausen/Switzerland Phone +41 -(0)52-631 1111 e-mail:
info.ps@georgfischer.com Internet: <http://www.gfps.com>