



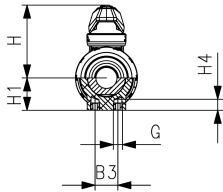
**ecoFIT**  
**Ball valve type 546 Pro**  
**With butt fusion spigots PE100 SDR17.6 metric**

**Model:**

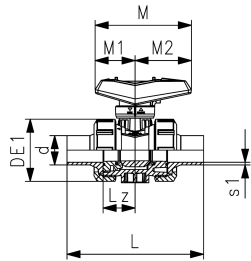
- Lockable lever as standard
- Ball seals PTFE
- Integrated stainless steel mounting inserts
- Z-dimension, valve end and union nut **are compatible** with type 546 (1<sup>st</sup> Generation)

**Option:**

- Interface module for position feedback sensor with LED (PNP, NPN and NAMUR)
- Manual spring return lever ("Dead man") (DN10-25)
- Pneumatic or electric actuators from GF
- Individual configuration of the valve possible



d (mm)	DN (mm)	Size (inch)	PN (bar)	kv-value ( $\Delta p=1$ bar) (L/min)	EPDM Code	SP Weight (kg)	FKM Code	SP Weight (kg)		
40	32	1 ¼	16	1000	<b>161 546 805</b>	1	0.582	<b>161 546 815</b>	1	0.550
50	40	1 ½	16	1600	<b>161 546 806</b>	1	0.750	<b>161 546 816</b>	1	0.750
63	50	2	16	3100	<b>161 546 807</b>	1	1.605	<b>161 546 817</b>	1	1.501



d (mm)	B3 (mm)	DE1 (mm)	G (mm)	H (mm)	H1 (mm)	H4 (mm)	L (mm)	Lz (mm)	M (mm)	M1 (mm)	M2 (mm)	s1 (mm)
40	45	84	M8	95.0	44	15		43	131	57	74	
50	45	97	M8	101.5	51	15	191	45	131	57	74	2.9
63	45	124	M8	116.5	64	15	220	51	152	66	86	3.6

The technical data are not binding. They neither constitute expressly warranted characteristics nor guaranteed properties nor a guaranteed durability. They are subject to modification. Our General Terms of Sale apply.

Georg Fischer Piping Systems Ltd, Postfach, CH-8201 Schaffhausen/Switzerland Phone +41 -(0)52-631 1111 e-mail:  
 info.ps@georgfischer.com Internet: <http://www.gfps.com>